

www.qdlauctions.com.au



20



26

27



29



30



31



32



33



34



35



36



37



38



28



39



39a



45



40



41



43



44



42



46



47



52



48



49



50



51



53



55



56



57



60



59



58



62



61



54



63



64



65



66



67



68



69



70



71



72



73



74



75



77



80



80



78



79



76



81



82



83



86



82



83



85



88



84



89



87



90



91



87



87



87



87



92



93



95



94



96



97



99



100



101



98



102



103



105



104



106



107



108



109



110



111



112



114



113



115



116



117



118



119



120



121



122



123



130



128



125



131



127



124



126



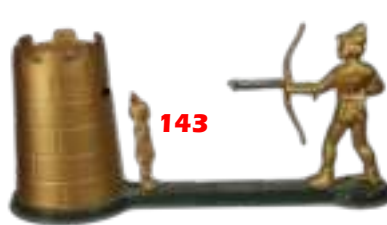
129



132



133



143



141



134



136



137



138



139



140



144



145



147



150



148



149



146



153



152

142



154



155



156



157



158



159



160



161



162



163



164



165



166



167



168



169



171

170



174



172



173



176



177



175



182



178



183



179



180



181



184



185



186



187



188



189



190



191



192



193



194



195



196



197



201



199



198



200



202



203



204



205



206



207



208



209



210



211



212



213



214



216



217



215



218



219



220



221



224

223

222



225



226



227



228



230



229



232

231



233



234



235



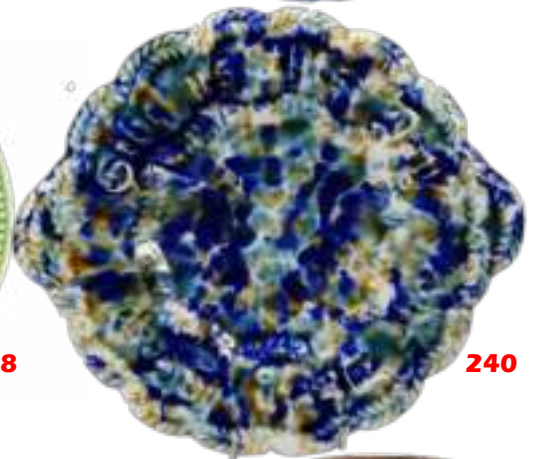
236



237



238



240



239



241



242



243



253



250



252



255



244



245



251



254

262



246



248



247



259



260



249



256



257



258



261



263



264



267



265



266



268



269



270



271



272



273



274



275



277



278



280



276

279



281



282



283



290



289



284



291



285



287



286



292



293

288

Graham Lancaster Auctions - Auction 104 Catalogue - July 2021

Auction Day: 1

| | | | |
|----|----------------------------------------------------------------------------------------------------------------------------------------------------------------------------------------------------------------------------------------------------------------------------------------|-----------|-------------|
| 1 | Advertising Beer Mug - t/t stoneware with handle - 'L. Steindl & Son, Federal Brewery, Maryborough' - a fancy badge with a pictorial of the Map of Australia (less Tasmania) - sparkling condition, exceptionally rare & possibly unique - 13.5cm tall | Very Good | 6000 - 8000 |
| 2 | Advertising Beer Mug - t/t stoneware with handle - 'Perkins XXX Ale, Perkins City Brewery' with a detailed pictorial of the old city brewery - a shallow 12mm X 10mm flake to side lip rim, otherwise sparkling. Extremely rare & desirable - 13.5cm tall | Very Good | 4000 - 5000 |
| 3 | Advertising Beer Mug - t/t 'Royal Doulton' stoneware with handle - 'Union Beer, (Kalgoorlie)' - an extremely rare half size variety in sparkling condition - 11cm tall | Very Good | 1250 - 1500 |
| 4 | Advertising Beer Mug - t/t stoneware with handle & blue print - 'Drink Bulimba Beer, Brewed at Valley Brewery' - some damage to upper body & rim has been restored to a very high standard - 13.5cm tall | Repaired | 600 - 800 |
| 5 | Advertising Beer Mug - t/t stoneware with handle - 'Castlemaine Sparkling Ale, New Brew' eagle carrying keg t/m - has a very fine 2cm hairline emanating from the 'I' in sparkling - a very rare and early piece of Queensland history - 13.5cm tall | Very Good | 5000 - 6000 |
| 6 | Advertising Beer Mug - t/t stoneware with handle 'Ware's Exchange Hote' (Adelaide, SA) - large size variety, some glaze misses to lip rim, internal crazing & glaze lines - 11cm tall | Very Good | 250 - 300 |
| 7 | 'With Compliments' Teapot - Japanese ceramic - blue transfer on white - 'Thompson & Frances, Toogoolawah' - some body discolouration - complete with original lid - 12cm tall | Very Good | 600 - 800 |
| 8 | Advertising Teapot - English ceramic two tone glaze with original lid - 'Nectar Tea' - tiny flake to spout rim - 11.5cm tall | Very Good | 125 - 150 |
| 9 | 'With Compliments' Teapot - Japanese ceramic - blue transfer on white - 'J.F Horsley, Caterer' (Warwick Q.) - restoration to spout & flakes to rim - original lid has been broken in half & reglued - 12cm tall | Good | 325 - 375 |
| 10 | Advertising Teapot - English ceramic - two tone with pictorials to shoulder - 'C.W.S. Teas, The Nation's Teapot' - complete with original lid. Has a 5mm flake to underside of spout tip - 13.5cm tall | Very Good | 225 - 275 |
| 11 | Stones 'With Compliments' Jug - u/m tapered milk jug with blue band & black transfer - 'With Compliments from Thorne & Walker' - lovely condition with minor marks - 14cm tall | Very Good | 325 - 375 |
| 12 | Stones 'With Compliments' Jug - u/m tapered milk jug with black transfer - 'N.G. Woods, General Storekeeper, Camp Hill' - some minor marks & a 3mm flake to base edge - 13cm tall | Very Good | 325 - 375 |
| 13 | Stones 'With Compliments' Jug - u/m tapered milk jug with blue band and black transfer - 'With Compliments from T. Mewing & Sons, 1933 & 1934' - some fine hairlines emanating from rim, and a 'U' shaped fracture to rear - 12.5cm tall | Good | 225 - 275 |
| 14 | Stones 'With Compliments' Jug - u/m tapered milk jug with black transfer - 'C.W. Dawson, 1935, With Compliments' - very clean with minor marks - 10.5cm tall | Very Good | 325 - 375 |
| 15 | Stones 'With Compliments' Jug - u/m tapered milk jug with blue banding & black transfer - 'With Compliments from W. Blake, Laidley' - some lip chips/wear have been well restored. 14cm tall | Good | 325 - 375 |
| 16 | Stones Souvenir Potties X 2 - a/w with black transfers - 'Souvenir of the Brisbane Show, 1935' with some crazing, 9cm diameter - the other is an 'Ode to USA Sargeant Johnson' who worked at Stones Pottery - some minor damage to lip rim has been well restored - 8 5cm diameter | Good | 325 - 375 |
| 17 | Stones Dish & Milk Saver - stamped monkey shaped dish - 'Chamber of Manufactures, 1935' with restoration to feet - 13cm long & a 'The Bristol Milk Watch' (milk saver) - 9cm diameter | Good | 225 - 275 |
| 18 | Stones Souvenir Potties X 2 - both a/w with black transfer - 1 is the 'Model Receiving Set, Brisbane Show, 1935', 9cm diameter. The other is '4 A.P. Receiving Set' - 'Have one on me' with Hitler to base. 6.5cm diameter | Very Good | 350 - 450 |
| 19 | Stones Cream Jug & Serviette Ring - small, tapered jug - 'Brisbane Exhibition, 1921' - 6cm tall & a stamped 'Bristol Pottery' serviette ring - 'Nambour Belle, Sydney, Christmas, 1934/5' - 6cm diameter | Very Good | 300 - 400 |
| 20 | Mckenzie's Advertising Porridge Bowls X 4 - English Ceramic - complete set including Goldilocks, father, mother & baby bear - some light scuffs & minor marks | Very Good | 225 - 275 |
| 21 | Advertising Milk Jug - English ceramic - tall tapered jug - advertising 'Hoopers Furniture Store, Hindley Street, Adelaide' - pictorial of a horseshoe - some minor glaze discolouration & marks with a shallow 30mm flake to underside of base edge - attractive and rare - 19cm tall | Very Good | 400 - 600 |
| 22 | Advertising Ashtrays X 2 - English & German ceramic - both advertising 'Henry Berry & Co Butchers Supplies' - featuring black pigs atop - both 10cm long | Very Good | 175 - 225 |

Graham Lancaster Auctions - Auction 104 Catalogue - July 2021

| | | | |
|----|----------------------------------------------------------------------------------------------------------------------------------------------------------------------------------------------------------------------------------------------------------------------------------------------------------------------------|-----------|-------------|
| 23 | Advertising Toilet Pulls X 2 - a/w with black transfer - 'F.S. Radcliffe, South Brisbane' & 'C D. Brown, The Valley' - both have hairlines running through mid. body & other minor marks - 11.5cm tall | Fair | 150 - 200 |
| 24 | Advertising Toilet Pull - a/w with black transfer - 'G.K. McPhail, Ipswich Road, Annerley' - very clean with some disguised hairlines - 11.5cm tall | Good | 125 - 175 |
| 25 | Advertising Toilet Pull - a/w with black transfer - 'F.S. Radcliffe & Sons, South Brisbane' - lovely condition with original chain - minor marks - 10.5cm tall | Very Good | 200 - 250 |
| 26 | Advertising Figure & Shaker - both a/w ceramic in the form of chef's heads - figurine is advertising 'Servex', other is a pepper shaker. Some minor marks - 8cm tall | Good | 75 - 125 |
| 27 | Advertising Pie Funnel & Timer - both 'Servex' chefs - pie funnel, 11cm tall. Egg timer glass sand tube, 9cm tall | Very Good | 225 - 275 |
| 28 | Advertising Servex Figure - English ceramic - a large figural advertising piece - 'All Good Cooks Use Servex' - crazing & light discolouration - a rare advertising figure, 22cm tall | Very Good | 500 - 750 |
| 29 | Leemings Advertising Plate - a/w ceramic with blue transfer - 'Leemings Boot Stores' featuring a Gazeeka with a walking cane - some glaze discolouration & minor marks - very rare & desirable | Very Good | 1250 - 1500 |
| 30 | Leemings Advertising Bowl - a/w English ceramic with a sepia transfer featuring the 'Leemings Boot Stores, Colonnade, No. 1 Boot Bazaar' - superb condition with only minor marks - very rare - 25cm diameter | Very Good | 2250 - 2750 |
| 31 | Leemings Advertising Plate - a/w ceramic with blue transfer - 'Leemings Boot Stores' featuring Shakespeare's house - lovely condition with some very minor marks - 25cm diameter | Very Good | 750 - 1250 |
| 32 | Coles Book Arcade Plate - a/w ceramic with maroon & black transfer - featuring the verses 'What Might Be Done' & 'Brotherhood of Man' - a desirable Melbourne literary plate - some crazing & minor marks - 27cm diameter | Very Good | 600 - 800 |
| 33 | Coles Book Arcade Plate - a/w ceramic with green & black transfer - featuring the verses 'What Might Be Done' & 'Brotherhood of Man' - a desirable Melbourne literary plate - some discoloured crazing with 3 restored chips to outer rim - 27cm diameter | Fair | 300 - 400 |
| 34 | Calyx Advertising Bowl - stamped 'Calyx, Perth WA' with swan to base - large deep bowl advertising 'Wm Roberts, The Service Stores, Railway Town, Broken Hill' - superb condition & extremely rare - 23cm diameter | Very Good | 750 - 1000 |
| 35 | Advertising Sheep Dip Plate - English ceramic with green border - 'Pearson's Dip (Pacolin)' with a pictorial of a sheep - some crazing and minor marks - 24cm diameter | Very Good | 325 - 375 |
| 36 | Monogram Advertising Plates X 2 - one is 'Crown Lynn Pottery' with various multicoloured NZ monograms, other is English ceramic with various black monograms - both 25cm diameter | Very Good | 175 - 225 |
| 37 | Advertising Rolling Pin - 'Grimwades' ceramic with green transfer and wooden handles 'Rhoades & Co, Home Furnishers, Brisbane' - some very minor marks - 44cm long | Very Good | 1250 - 1500 |
| 38 | Advertising Rolling Pin - English ceramic with black transfer and wooden handles 'Bussell's White Wings Flour' - some discoloured crazing & minor marks - 42.5cm long | Good | 325 - 375 |
| 39 | Advertising Rolling Pin - 'Grimwades' ceramic with green transfer and wooden handles - advertising various Grimwades products, including the Quick Cooker and Household Jars an attractive pictorial rolling pin with some discoloured crazing & marks - 47cm long | Good | 750 - 1000 |
| 40 | Leemings Advertising Shoe - German bisque shoe with a figure of a Gazeeka atop - multicoloured artwork on a pink shoe 'Leemings Boot Stores' with various addresses. Some minor marks - 16cm long | Very Good | 500 - 600 |
| 41 | Leemings Advertising Shoe - German bisque shoe with a figure of a Gazeeka atop - multicoloured artwork on a white & blue shoe 'Leemings Boot Stores' with various addresses. Some minor marks - 16cm long | Very Good | 500 - 600 |
| 42 | Coles Book Arcade Cup - German ceramic with multicoloured and gilded artwork 'A Present From Coles Book Arcade' - lovely condition with minor marks - 7.5cm tall | Very Good | 225 - 275 |
| 43 | Leemings Advertising Shoe - German bisque shoe with a figure of a Gazeeka atop - multicoloured artwork on a cream and blue shoe 'Leemings Boot Stores' with various addresses, a rare left facing shoe which has had major restoration to the heel, rear shoe & face. The first we have sold. Some minor marks - 16cm long | Repaired | 225 - 275 |
| 44 | Leemings Advertising Items X 4 - all nickel plated - 3 are button hooks and a corkscrew, 8 12cm long | Good | 100 - 125 |
| 45 | Harvey School Vase - incised 'M. MacDonald 1939, Q' - tall square footed slab vase with carved floral decoration to upper body - multicoloured majolica glaze with a 10cm chip to 1 foot. 17cm tall | Good | 175 - 225 |
| 46 | Harvey School Jug - incised 'A. R. Philp, 1938' to base - large tapered handle jug with stylised branch handle and applied gum leaves and nuts, with a pink glaze on tan - a tiny chip to the underside of base - 14cm tall | Very Good | 225 - 275 |

Graham Lancaster Auctions - Auction 104 Catalogue - July 2021

| | | | |
|----|-------------------------------------------------------------------------------------------------------------------------------------------------------------------------------------------------------------------------------------------------------------------------------------------------------------------------------------------------------------|-----------|-------------|
| 47 | L.J. Harvey Vase - incised 'Lewis Harvey, 1926, Q.' to base - a spectacular tall hand built vase with flared rim & carved decoration, featuring Pan with his pipe in a night time silhouette landscape scene - a rich blue black & tan glaze - excellent condition with some clay pulls to the underside of base edge. An important early piece - 22cm tall | Very Good | 6000 - 8000 |
| 48 | Harvey School Figurine - incised 'I. M. (in Monogram) (Ida Martin), 1947' - a spectacular hand built Kookaburra in a multicoloured cobalt blue, green & tan glaze on cream. A substantial work from one of Harvey's finest students, 19.5cm tall | Very Good | 3500 - 4500 |
| 49 | Harvey School Vase - incised 'Hand Built by H. Hope, 1938' - a well hand built ovoid vase, with fine carved decoration of stylised acorns and oak leaves - beautiful multicoloured drip glaze of blue, yellow & green on tan. 15.5cm tall | Very Good | 400 - 500 |
| 50 | Brickworks Money Box - incised 'Willoughby Congregational Church, NSW, 1926' to base a finely detailed model of the Sydney church, in a typical brickworks salt glaze with coin slot to rear body. Lovely condition, 10cm tall | Very Good | 500 - 600 |
| 51 | Brickworks Money Box - u/m salt glaze - heeled Victorian shoe with fine detail and coin slot atop - some small glaze faults - 14.5cm long | Very Good | 225 - 275 |
| 52 | Pottery Money Box - u/m majolica glaze keg shaped money box with large coin slot atop and dedication to 'Agnes' on shoulder - a shallow flake near coin slot - 8.5cm tall | Very Good | 200 - 250 |
| 53 | Pottery Money Box - u/m but attributed to Bendigo Pottery - a rich cobalt blue glaze with decorative cogging - finial and coin slot atop - lovely condition with minor marks - 15cm tall | Very Good | 325 - 375 |
| 54 | Pottery Money Box - u/m but attributed to James Campbell, Brisbane - very large waisted money box with a green glaze fluted chimney & coin slot atop - lovely condition with minor marks - 21cm tall | Very Good | 200 - 250 |
| 55 | Pottery Money Box - u/m but attributed to Bendigo Pottery - multicoloured majolica spotted glaze on a cream background with decorative cogging, finial and coin slot atop. Some minor marks | Very Good | 400 - 500 |
| 56 | Pottery Money Boxes X 2 - u/m Rockingham glazed in the form of a chest of drawers - one has damage to coin slot atop - 7cm & 6.5cm tall | Good | 225 - 275 |
| 57 | Pottery Money Boxes X 2 - one is salt glaze, other is terracotta - both are waisted shapes with finials atop and coin slots to shoulder - some minor marks - both 17cm tall | Very Good | 200 - 250 |
| 58 | Brickworks Shoe & Wall Plaque - both u/m and salt glazed - small Victorian heeled boot with fine detail - 8.5cm tall & a 'Dinmore' dog's head wall plaque, 12.5cm tall. Both have minor marks | Good | 125 - 150 |
| 59 | Pottery Shoes X 2 - both heeled Victorian boot - one is salt glazed with blue highlights - 8 5cm tall, other is green, tan & black glaze, 10cm tall with crazing & fine hairlines | Good | 125 - 150 |
| 60 | Brickworks Shoes X 2 - both u/m salt glazed - matching pair of heeled shoes with stylised laces & impressed decoration. The top of both tongues have been restored - 18cm long | Good | 175 - 225 |
| 61 | Pottery Shoes X 3 - all u/m but attributed to Stones Pottery - one has a lilac glaze, 16cm long, one is blue glaze with fine hairlines, 16cm long & other is green glaze with a fine hairline, 12cm long | Good | 125 - 150 |
| 62 | Pair of Brickworks Swans - u/m but attributed to 'Dinmore Pottery' - a pair of vases in the form of swans - 11cm tall | Very Good | 175 - 225 |
| 63 | Harvey School Jug - incised 'J.C.' to base - fine, footed jug with handle & pouring spout - attractively carved geometric decoration in a soft brown & white drip glaze - 9cm tall | Very Good | 175 - 225 |
| 64 | Harvey School Ashtray - incised 'L.N. ? 1939' to base - small ball shaped ashtray decorated with two well modelled mice in a soft green, yellow & tan drip glaze - some minor restoration to base edge - very cute - 6.5cm tall | Good | 225 - 275 |
| 65 | Harvey School Jug & Sugar Bowl - incised 'D.N' (Daisy Nosworthy) 1937' to base - a matching pair of footed vessels with stylised handles with gum leaf & nut decoration - green & maroon drip glaze on multicoloured body - both have some restoration, mainly to rims - both 10cm tall | Good | 325 - 375 |
| 66 | Harvey School Trough Vase - incised 'J.E.' to base - log shaped footed trough with 2 applied kookaburras atop, some restoration to tails - 26.5cm long | Good | 275 - 325 |
| 67 | Advertising Tea Set - English Ceramic - comprising of tea pot, milk jug, sugar bowl & creamer - all advertising 'The Western Stores' - 5 - 13cm tall | Very Good | 225 - 275 |
| 68 | Advertising Pudding Bowl - English ceramic advertising 'R.W. Thurlow & Co, Brisbane, Sole Agents, For Turkish Coffee & Royal Baking Powder' - a stunning pictorial of a Turk's head - a very rare & early Brisbane advertising bowl - has been extensively restored to a very high standard - 10.5cm tall X 16cm diameter | Repaired | 350 - 450 |
| 69 | Advertising Bowl - Japanese ceramic - black transfer - 'With Compliments from Walter Dowling, The White Store, Inglewood' - a scarce piece from a small Queensland country town - 20cm diameter | Very Good | 200 - 250 |

Graham Lancaster Auctions - Auction 104 Catalogue - July 2021

| | | | |
|----|------------------------------------------------------------------------------------------------------------------------------------------------------------------------------------------------------------------------------------------------------------------------------------------------------------------|-----------|-----------|
| 70 | Advertising Giant Teacup - English ceramic with red, green & blue transfer - 'Penneys, For All Porcelain' with a wreath design - a fine 80mm hairline emanating from rim near handle. An extremely rare advertising piece from this Brisbane department store - 12cm tall | Very Good | 600 - 800 |
| 71 | Advertising Tea Set - English Ceramic - comprising of teapot, milk jug, sugar bowl & creamer - all advertising 'P.G. Smith & Regans' - restoration to teapot spout & some shallow chips to base of milk jug 5 - 13cm tall | Good | 175 - 225 |
| 72 | Advertising Tea Set - English ceramic comprising of a large and small teapot & a milk jug blue & white glaze with black transfer, advertising 'Goldenia' (Tea) - lovely clean condition & hard to find - 10.5cm - 12cm tall | Very Good | 325 - 375 |
| 73 | Advertising Teapot - English ceramic with gold leaf transfer - 'Pure Ceylon Tea, of Quality & Flavour' - large caterers size with a replacement lid that displays well - 17.5cm tall | Very Good | 175 - 225 |
| 74 | Robur Teapots X 2 - marked with Australian & New Zealand patents to bases - large size in a deep green glaze - EPNS lid complete with inner strainer - 12cm tall. Also a small lime green glazed pot with EPNS lid, 10cm tall | Very Good | 225 - 275 |
| 75 | Advertising Teapot - English ceramic - complete with lid and hand painted 'Bushell's Tea, More Cups, Finer Flavour' to side body - lid has been restored - 16cm tall | Good | 125 - 150 |
| 76 | Advertising Chemist Shop Bottle - very large glass '4711 Cologne' bottle - complete with labels & foil stopper - round rear opening window has a cracked fracture emanating, 40mm - a fantastic show piece 41cm tall | Very Good | 275 - 325 |
| 77 | Kangaroo Teapot - u/m early reproduction of a Stones Kangaroo Teapot - rich green glaze complete with lid - one ear has been broken & repaired - 13cm tall | Good | 200 - 250 |
| 78 | Kangaroo Teapot - u/m early reproduction of a Stones Kangaroo Teapot - rich blue glaze, complete with lid - minor marks 13cm tall | Very Good | 225 - 275 |
| 79 | Barge Ware Teapot - also known as 'Measham Ware' - English earthenware giant teapot with press moulded handle, spout & applied relief decoration. - 'A Present from a Friend' - original lid has a decorative teapot as a knob which has restoration to the spout - a monumental piece of Victoriana - 34cm tall | Very Good | 400 - 500 |
| 80 | Pair of Barge Ware Teapots - English ceramic with press moulded spouts and handles with applied decorative relief - both 'Home Sweet Home' with teapots as lid knobs - one is antique with restoration to knob & spout, other is a reproduction - both 14cm tall | Very Good | 175 - 225 |
| 81 | Belleek Chamber Pot - with base stamp and British rego. diamond - a very fine decorative chamber pot with a transferred portrait of a stately gentleman to inner base - 10cm tall X 14cm diameter | Very Good | 225 - 275 |
| 82 | Musical Chamber Pot - Crown Devon with musical mechanism to base - 'Oh Landlord Fill the Flowing Bowl' with comic to side body & a patent 'Non Splash Thunderbowl' with a peering eye - a rare & unusual piece - 22cm diameter | Very Good | 325 - 375 |
| 83 | Musical Chamber Pot - Crown Devon with musical mechanism to base - 'Have this on Old Nasty, Another Violation for Poland' - 'No. 1 Jerry' to side body & a caricature of Hitler to non splash inner base - some crazing & fine lines - a rare & unusual piece - 22cm diameter | Very Good | 425 - 475 |
| 84 | Mini Chamber Pots X 3 - all English ceramic - novelty ashtrays - all featuring Adolf Hitler to inner base - 5cm diameters | Very Good | 125 - 150 |
| 85 | Victorian Lidded Chamber Pot - u/m English ceramic with blue & white floral decoration - stylised bamboo handle with matching lid which has a 15mm hairline emanating from outer rim - 22.5cm diameter | Good | 225 - 275 |
| 86 | Early Tin Glazed Chamber Pot - u/m English ceramic with pink & black decoration - one side is transferred with a verse, other side features the 'Iron Bridge over the Wear River' - inner base has a caricature and cartoon - very early fine quality with double handles - 22cm diameter | Very Good | 300 - 400 |
| 87 | 'With Compliments' Teapot - Japanese ceramic with blue transfer decoration & original matching lid - advertising 'Humphries & Tow, The Peoples Store, Boonah' - a tiny flake to tip of spout - 11cm tall | Very Good | 600 - 800 |
| 88 | 'With Compliments' Teapot - Japanese ceramic with blue transfer decoration & original matching lid - advertising 'Percy Horn, General Providers, Babinda' - a tiny flake to tip of spout - 11cm tall | Very Good | 600 - 800 |
| 89 | 'With Compliments' Teapot - German ceramic - a/w with multicoloured transfers - 'New Cash Store, A. Schumann, Gympie QLD' with detailed pictorial of the store with vintage vehicles parked in front - some minor wear & a tiny 3mm flake to tip of spout - 11.5cm tall | Very Good | 175 - 225 |
| 90 | 'With Compliments' Teapot - Japanese ceramic with blue transfer - 'Ballantines' (Forest Hill, QLD) - lovely condition, but no lid - 10cm tall | Very Good | 400 - 500 |
| 91 | 'With Compliments' Teapot - Japanese ceramic with blue transfer decoration - 'S. Macree, Townsville' - complete with matching lid - has a shallow chip to rim, some small flakes to tip of spout & a hairline impact to one side - 11cm tall | Good | 400 - 500 |

Graham Lancaster Auctions - Auction 104 Catalogue - July 2021

| | | | |
|-----|-------------------------------------------------------------------------------------------------------------------------------------------------------------------------------------------------------------------------------------------------------------------------------------------------------------------------------------------------------------------------------------------------------------------------|-----------|-------------|
| 92 | Stones Cannister Set - u/m but easily attributable - graduated set of 5 cannisters with hand painted decoration of morning glory - all have some damage to body or lids - a very rare set - 11 - 17cm tall | Fair | 175 - 225 |
| 93 | Pair of Stones Jardinieres - with impressed daisy pattern mark to bases - one is medium sized with a blue & mulberry drip glaze, 13cm tall. Other is small size in a mulberry glaze, 11cm tall - both have minor marks | Very Good | 175 - 225 |
| 94 | Giant Stones Jardiniere - impressed daisy pattern mark to base - an attractive mulberry & blue drip glaze jardiniere - has been used with some internal scale & a fine 10mm stress line from manufacture - 20cm tall X 30cm diameter | Good | 325 - 375 |
| 95 | Charles Stone Vase - impressed 'CAS' to base - an attractive wheel thrown vase with flared rim with a tan drip glaze on green - 15cm tall | Very Good | 125 - 150 |
| 96 | Stones Teapot - u/m but easily attributable - classic 'pumpkin' shaped teapot with matching lid - a pleasant green drip glaze on yellow - excellent condition with only minor marks - 15cm tall | Very Good | 200 - 250 |
| 97 | Bendigo Cheese Cover - two piece circular cheese cover and plate in Holly pattern - green yellow & tan glaze on cream - cover is perfect, inner base of bell has some discoloured crazing - 15.5cm tall | Very Good | 1250 - 1500 |
| 98 | Bendigo Sardine Dish - colonial two piece lidded sardine dish in basket weave pattern & shell as handle - a pleasant yellow & tan glaze in great condition. Some minor damage to rim of base plate has been restored to a very high standard - 21cm X 18cm X 9.5cm tall | Good | 1500 - 1750 |
| 99 | Bendigo Coffee Pot - impressed 'T.B.P.C.' mark to base - magnificent colonial 'Rococo' style coffee pot with stylised handle & matching lid - striking cobalt blue, brown & yellow drip glaze - a small flake to base of spout & inner lid fastening lug has been professionally restored with some crazing & minor marks - a truly magnificent colonial coffee pot - 25 5cm tall | Good | 2500 - 3000 |
| 100 | Bendigo Cheese Cover - u/m - large two piece triangular cheese cover & base plate in chrysanthemum pattern - yellow, green & brown glaze on cream - again in remarkable condition with very minor marks - 27cm long X 25cm wide X 20cm tall | Very Good | 1750 - 2250 |
| 101 | Bendigo Cheese Cover - u/m - two piece cheese dome & base plate in tulip design - green & blue glazed highlights on cream - plate is perfect, bell has a 110mm hairline emanating from base edge up side body - a rare pattern & shows well - 22cm diameter X 20cm tall | Good | 600 - 800 |
| 102 | Bendigo Leaf Plate - u/m - a circular press moulded plate with vine leaf pattern in a soft green glaze - small high points of vine stem have been retouched, otherwise very clean - 22cm diameter | Very Good | 600 - 800 |
| 103 | Bendigo Bread Plate - u/m - an attractive circular plate with handles - embossed lettering & wheat sheaf decoration - yellow, green & white glaze on a Rockingham body - some very minor scuffs & marks - most attractive - 27.5cm diameter | Very Good | 1500 - 1750 |
| 104 | Bendigo Dresden Ware Basket - anchor stamp to base - moulded 'figure 8' handled tray in basket weave pattern with applied floral decoration to handle - blue, green & tan drip glaze some chipping to leaves but condition is still very good, basket has some discoloured crazing & fine lines - an extremely rare piece of Bendigo pottery, particularly finding a marked piece - 22.5cm long X 15cm wide X 14cm tall | Good | 1500 - 1750 |
| 105 | Bendigo Bread Plate - u/m leaf shaped handled plate with embossed lettering & wheat sheaves - 'Give Us This Day Our Daily Bread' - blue & white highlighted glaze on tan - some surface scuffs & marks - 1 handle has been repaired - 27cm wide X 30cm long | Good | 600 - 800 |
| 106 | Bendigo Garden Ornament - u/m but easily attributable - a wonderful large green glaze frog with black highlights to eyes and mouth - lovely condition - 14cm tall X 18.5cm long | Very Good | 225 - 275 |
| 107 | Bendigo Soap Dish - u/m but easily attributable - a brown glaze shell dish with a well modelled green frog atop - lovely condition - 15m X 13cm | Very Good | 200 - 250 |
| 108 | Bendigo Tobacco Jar - u/m but easily attributable - a classic dog's head tobacco jar with removable lid in green, tan & yellow glaze - outstanding condition with 2 shallow flakes to underside of lid flange - 14cm tall | Very Good | 1250 - 1500 |
| 109 | Bendigo Soap Dish - u/m but easily attributable - a blue glaze shell dish with a brown glaze rotary wheel atop - 'Rotary International, Ballarat, 1951' - rotary wheel has been broken & reglued with some touch ups to rear body - scarce | Repaired | 125 - 150 |
| 110 | Bendigo Face Jug - u/m but easily attributable - Rockingham glazed face jug with ribbons - 'Hutchens, Bendigo' - lovely condition with a tiny 3mm flake to side rim | Very Good | 750 - 1000 |
| 111 | Bendigo Money Box - incised 'S.S. 20/6/1919' to base - classic beehive money box in a deep pink and lime green glaze - a very fine 30mm hairline emanating from coin slot - very rare & desirable - 11cm tall | Very Good | 1500 - 1750 |
| 112 | Bendigo Soap Dish - u/m but easily attributable - tan glaze shell dish with kookaburra atop - 'Souvenir of Bendigo' - 9.5cm tall | Very Good | 200 - 250 |

Graham Lancaster Auctions - Auction 104 Catalogue - July 2021

| | | | |
|-----|--------------------------------------------------------------------------------------------------------------------------------------------------------------------------------------------------------------------------------------------------------------------------------------------------------------------------------------------------------------|-----------|-------------|
| 113 | Huntley Figurine - stamped 'Huntley Pottery' to base - a spectacular slip cast figure of a platypus on a rock in striking multicoloured majolica glaze - 20cm long | Very Good | 225 - 275 |
| 114 | McHugh Leaf Plate - incised 'H. McHugh, Tasmania' to base - small press moulded plate featuring a vine leaf - green glaze on mottled tan - scarce small size - 13cm diameter | Very Good | 225 - 275 |
| 115 | Advertising Bar Figurine - Czech ceramic - a slip-cast figure of a bulldog in a white glaze with black highlights - blue glaze jacket advertising 'Robt Porter & Co, Bulldog Guinness' - 15.5cm tall | Very Good | 400 - 500 |
| 116 | Royal Doulton Figurine - transferred stamp to base - a small slip-cast model of a seated bulldog draped in the Union Jack - some light wear & minor marks - 6cm tall | Very Good | 125 - 150 |
| 117 | Royal Doulton Figurine - transferred stamp to base - a large slip-cast model of a seated bulldog draped in the Union Jack - some light wear & minor marks - 13.5cm tall | Very Good | 325 - 375 |
| 118 | Guinness Advertising Lamp - transferred 'Carlton Ware' stamp to base - slip-cast figure of a toucan with a glass of beer - 'Guinness is Good for You' - provision for lamp shade and electric wire - original, not reproduction | Very Good | 225 - 275 |
| 119 | Advertising Chemist Shop Figure - European Bisque - a stunning figure of the 'Pears Soap' bubbles boy sitting on a log with a bowl of bubbles and pipe - original pipe has a small repaired flake, figure is excellent - 15cm tall | Very Good | 275 - 325 |
| 120 | Advertising Bar Figure - hand painted plaster figure of 'Bosun Bill' on the plinth base advertising 'Beenleigh Rum' - an excellent example with some minor touch ups & marks - 46cm tall | Very Good | 800 - 1200 |
| 121 | Advertising Shop Figure - English ceramic - imp. 'Cooper & Co, Hanley' to base - a stunning slip-cast model of a school boy leapfrogging over a stump - advertising 'Hardia Clothing for Boys' - striking multicoloured glaze with a sponged plinth base - exceptionally rare & amazing condition - 33cm tall | Very Good | 2250 - 2750 |
| 122 | Advertising Shop Figure - plaster made by 'Perugia, Melbourne' bust of Santa Claus advertising 'Star Spices' - hand painted in red, white, black & gold - some touch ups but shows well - 42.5cm tall | Good | 600 - 800 |
| 123 | Advertising Chemist Shop Figure - European Bisque - a slip-cast model of 'Pears Soap, You Dirty Boy' featuring a woman washing a boy with Pears soap - multicoloured hand painted glaze - some minor touch ups - 15.5cm tall | Good | 225 - 275 |
| 124 | Giant Advertising Figure - Terracotta - made by the 'Watcombe Pottery Co, St Marychurch South Devon' - a spectacular & finely detailed figure advertising 'Pears, You Dirty Boy' featuring a woman washing a boy with Pears soap - some very minor marks with a few old flakes to plinth base - one of the best advertising figures in the world - 64cm tall | Very Good | 6000 - 8000 |
| 125 | Advertising Chemist Shop Figure - Victorian bisque figure of a woman washing a boy - 'You Dirty Boy' (Pears Soap) - a superb early advertising figure with hand painted blue highlights on a white body - some small chips to base edge and a chip to underside of base - a rare item in remarkable condition - 20cm tall | Very Good | 1250 - 1500 |
| 126 | Advertising Figurine - plaster - a well modelled caricature in his golfing outfit with flat cap - 'He Played a Penfold' - has been touched up and repainted in parts - 50cm tall | Very Good | 600 - 800 |
| 127 | Advertising Chemist Shop Figure - Dresden ceramic advertising 'Yardley's Old English Lavender' featuring a mother & 2 children picking lavender - figures have been broken & amateurishly reglued - an extremely rare example - worthy of professional restoration - 31 5cm tall | Damaged | 225 - 275 |
| 128 | Advertising Soap Holder - European ceramic advertising 'Yardley's English Lavender' - featuring a mother & 2 girls picking lavender with their dog - 17.5cm tall | Very Good | 325 - 375 |
| 129 | Advertising Bar Figure - plaster - featuring 'Bertie the Cellar Man' in his apron and 'trademark moustache' - an advert used for 'Ballarat Beer' - good condition with some minor retouches - 56cm tall | Very Good | 750 - 1000 |
| 130 | Kingsford Smith Figure - cast Spelter bust of 'Sir Charles Kingsford Smith' on a wooden plinth base - an original early example - 27cm tall | Very Good | 225 - 275 |
| 131 | Kingsford Smith Busts X 2 - well modelled figures of Sir Charles Kingsford Smith - one is an original cast spelter on wooden base, 18.5cm tall with worn paint, other is a later plaster variety, 19cm tall | Good | 200 - 250 |
| 132 | Emu Table Centerpiece - silver plate by 'James Deakin & Co, Sheffield' featuring a large emu standing beside tree, hanging foliage & provision atop for glass epergne - 35cm tall | Good | 325 - 375 |
| 133 | Kangaroo Mystery Clock - 'Junghams, Germany' - cast brass figure of a kangaroo with joey on a wooden plinth base that holds a hanging mystery clock movement - 31.5cm tall | Very Good | 500 - 600 |
| 134 | Pair of Sideshow Figurines - both cast plaster & from the 'Stanthorpe Show, 1933' - one is a figure of Mae West, 37.5cm tall. Other is a figure of W.C. Fields, 42cm tall - both in great original condition with some minor touch-ups | Good | 300 - 400 |

Graham Lancaster Auctions - Auction 104 Catalogue - July 2021

| | | | |
|-----|-------------------------------------------------------------------------------------------------------------------------------------------------------------------------------------------------------------------------------------------------------------------------------------------------------------------------------------------------------------------------------------------------------------------------------------------------------------------------------------------------------------------------------------------------------------|-----------|-------------|
| 135 | Figural Clock Garniture Set - fine Victorian French cast spelter clock with matching pair of garniture figures - modelled bronzed patinated metal figures mounted on ebonised wooden bases - signed 'Xavier Raphanel' - featuring a woman on a burning house holding a baby ('In Danger') and 2 firemen - one with fire hose ('Bravery'), other with rescued child ('Saved') - excellent original condition - one fireman has a crack to his rear neck, otherwise remarkable condition. Undoubtedly the best garniture set we have offered - 57 - 72cm tall | Very Good | 2500 - 3500 |
| 136 | Clarke's Pyramid Food Warmer - complete set comprising of a transferred ceramic lidded food warmer - tin plate stand complete with candle & light shade - some very minor marks 25cm tall | Good | 250 - 300 |
| 137 | Victorian Thermometer - finely carved mahogany body & plinth base with a glass thermometer plate - 'Flavelle Bros & Roberts, Sydney & Brisbane' - lovely example & beautiful condition - 36cm tall | Very Good | 275 - 325 |
| 138 | Victorian Automation Music Box - early German brass bird cage with singing birds, wind up musical mechanism in base - works but needs some attention - 26.5cm tall | Very Good | 500 - 600 |
| 139 | Victorian English Pub Till - mahogany with brass fittings & enamel name plates - 'J.C. Cox' double sided English pub till - used for tracking over the counter payments at public houses - a unique mechanism with four inset bowls for loose change and a locked drawer excellent original condition - 40cm tall X 65cm wide X 40cm deep | Very Good | 1500 - 1750 |
| 140 | Antique Arcade Poker Game - heavy cast iron bench mounted amusement arcade machine - coin operated & push button with a mechanical card dealing device inside - wonderful worn original condition - 22.5cm tall X 26cm wide & 21cm deep | Good | 500 - 600 |
| 141 | Mounted Emu Egg - nickle plated base featuring an aboriginal with boomerang, kangaroo & emu - carved emu egg candle holder sits on top of palm fronds - 21.5cm tall | Very Good | 400 - 500 |
| 142 | Ceremonial Baton - wooden baton with a sterling silver tip featuring an eagle and crown and used by the Northern Rhodesian Police - some wear & marks - 71cm long | Very Good | 125 - 150 |
| 143 | Mechanical Money Box - early Australian tin plate money box featuring William Tell shooting the apple off the boy's head - excellent original condition with some wear & minor marks - 36cm long X 17cm tall | Very Good | 500 - 600 |
| 144 | Cast Iron Money Box - 'Eiffel Tower Bank' - an original finely cast Victorian Bank - coin trap missing - 22.5cm tall | Good | 600 - 800 |
| 145 | Cast Iron Money Box - 'The Tower Bank' - an original finely cast bank - 23.5cm tall | Very Good | 500 - 600 |
| 146 | Mechanical Money Box - 'Uncle Sam Bank' - a superb original cast iron bank featuring Uncle Sam - original paint is worn - very rare - 29.5cm tall | Very Good | 2000 - 2500 |
| 147 | Cast Iron Money Box - 'State Bank' - very large original detailed 'State Bank' - 21.5cm tall | Very Good | 400 - 500 |
| 148 | Mechanical Money Box - 'The Bull Dog Bank' - finely cast original bank - tail mechanism knocks coin off nose into mouth - has been repainted - 20cm tall | Good | 750 - 1000 |
| 149 | Mechanical Punch & Judy Bank - cast iron - original paint is worn - lovely detail - 19cm tall | Good | 1250 - 1500 |
| 150 | Cast Iron Money Box - 'Tally-Ho Bank' featuring a horse shoe with horse head, fox & dog - original paint is worn - 12cm tall | Good | 325 - 375 |
| 151 | Cast Iron Money Box - 'The Palace Bank' - a wonderfully detailed cast iron palace with double entry & tower - a superb original - 'Ives & Co, USA' - 20cm wide X 18cm tall | Very Good | 750 - 1000 |
| 152 | Cast Iron Money Box - 'Transvall Money Box' - a finely cast figure of a stout man - original English manufacture complete with pipe - coin trap has been replaced - 16cm tall | Very Good | 750 - 1000 |
| 153 | Cast Iron Money Box - 'Dreadnought Bank, United We Stand' - English manufacture - a finely cast figure of a battle ship, union jacks etc - 18cm tall | Very Good | 600 - 800 |
| 154 | George Reid Paperweight - cast iron - crudely cast figure of the politician George Reid - 12cm tall - original paint is worn - 12cm tall | Good | 80 - 120 |
| 155 | Vesta Striker & Tray - cast iron with burnished finish - figure of a cherub holding the ark advertising 'Bryant & May Matches' - 11.5cm tall | Very Good | 225 - 275 |
| 156 | Vesta Striker & Tray - cast iron figure of a donkey with a framed vesta holder atop - advertising 'Bryant & May Matches' - another superb original piece - 15.5cm tall | Very Good | 225 - 275 |
| 157 | Pair of Novelty Book Ends - cast iron - both featuring 'The Trusty Servant' - celebrating the 'Trusty Servant's Portrait, Winchester' (founded 1387). 11cm tall | Very Good | 150 - 175 |
| 158 | Kangaroo Paper Weight - cast iron with kangaroo & celebrating 150 years - 12.5cm tall | Very Good | 125 - 150 |
| 159 | Cold Painted Bronze Kangaroo - u/m Austrian manufacture - highly detailed figure of a standing kangaroo - original condition - 10.5cm tall | Very Good | 500 - 600 |
| 160 | Pair of Kookaburra Bookends - a mirrored pair of cast kookaburra bookends sitting on trunks and a plinth base - electroplated nickle finish on brass - great condition - 13cm tall | Very Good | 225 - 275 |
| 161 | Cigar Cutter & Matchbox Holder - Victorian cast iron patent cigar cutter - 14cm long & a pressed tin matchbox holder advertising 'Wunderlich Ceilings' - 9.5cm tall | Very Good | 150 - 200 |

Graham Lancaster Auctions - Auction 104 Catalogue - July 2021

| | | | |
|-----|---------------------------------------------------------------------------------------------------------------------------------------------------------------------------------------------------------------------------------------------------------------------------------------------------------------------------------------------------------------------------------------------------------------------------------------------------|-----------|--------------|
| 162 | Victorian Can Openers X 2 - cast iron - both featuring bull's heads - different varieties, one has an old repair - 16cm long | Good | 60 - 80 |
| 163 | Advertising Paperweights X 3 - all cast lead in the form of 'Vesta Batteries' - one is celebrating the opening of the 'Clarence River Bridge, Grafton' & another is a 'Souvenir of the Melbourne Centenary, 34/35' | Very Good | 125 - 150 |
| 164 | Victorian Can Openers X 2 - cast iron - both featuring bull's heads - different varieties, 16cm long | Very Good | 80 - 120 |
| 165 | Advertising Paperweights X 2 - one is brass with clenched hand atop - 'Wilson Waratah Metal Co, Brisbane', 9.5cm long & a lead lidded 'Vesta Battery', 7cm tall | Very Good | 125 - 150 |
| 166 | Victorian Can Openers X 2 - cast iron - both featuring bull's heads - different varieties, one has a wooden handle - 16cm long | Very Good | 80 - 120 |
| 167 | Pair of Advertising Paperweights - round cast brass paperweights in the form of a 'Furphy' water cart tank end | Very Good | 150 - 200 |
| 168 | LJ Harvey Framed Medallions - a magnificent pair of pressed bronze medallions - signed 'LJH' - one is the Andrew Moles Memorial Medal, Young Judges Competition' portrait of a young man - the other is 'The Illawarra Milking Shorthorn Society, Won by D.J. Henry, Royal National Show, 1931' featuring a dairy cow. Beautifully mounted in an ornate silky oak frame - medallions are 15cm diameter, frame is 58cm wide X 30cm tall X 8cm deep | Very Good | 2500 - 3500 |
| 169 | Boer War Framed Plaque - nickle plated brass rectangular plaque featuring 'A Gentleman in Khaki' holding gun with bayonette. Original tarnished finish mounted on an oak frame - 22cm wide X 32cm tall | Very Good | 225 - 275 |
| 170 | King Plate - large brass crescent shaped Aboriginal breast plate - jeweler engraved - 'King Charlie, Pascoe River, Cape York' - flanked with a kangaroo and emu - an original king plate that has been polished and framed - plate is 25cm wide X 14cm tall | Very Good | 7500 - 10000 |
| 171 | King Plate - brass crescent shaped Aboriginal breast plate with impressed jewelers mark to reverse. Complete with original brass chain - engraved 'Mickey King of Preety Bend' - flanked with a kangaroo, emu and spears - from the Hughenden region in Central Queensland - another original king plate that has been well used with surface wear | Good | 4000 - 5000 |
| 172 | Framed Exhibition Medallion - ornate silky oak frame holding a large plaster exhibition medal - 'The Intercolonial Exhibition, Victoria - 1866-7' - featuring female figures - 'Awarded to W. Smith' 32cm X 32cm | Very Good | 325 - 375 |
| 173 | Framed Medallion - round mahogany frame with a cast brass medallion - the symbol of 'The Isle of Man' featuring a three legged symbol - 'Quocunque Jeceris Stabit' which translates 'whichever way you throw, it will stand' - good original condition - 23cm diameter | Very Good | 150 - 200 |
| 174 | Advertising Mirrors X 2 - both tennis racket shaped hand mirrors advertising 'The Cressy Tennis Rackets' - original condition with wear & peeling - an interesting pair - 35cm tall | Very Good | 225 - 275 |
| 175 | Novelty Picture Frame - an Edwardian picture frame standing on a 2 wheel bicycle - unusual & attractive - 23cm tall X 20cm wide | Very Good | 200 - 250 |
| 176 | Advertising Thermometer - wooden with glass temperature tube - advertising 'Leemings Boot Stores, 3 Melbourne Addresses' - original with some fading & wear - 23cm X 53cm | Good | 225 - 275 |
| 177 | Advertising Thermometer - enamel wall mounted thermometer - black on white - 'Stephens Ink, For All Temperatures' - excellent condition with some chipping mostly to top mount - 17cm wide X 93cm tall | Very Good | 600 - 800 |
| 178 | Illuminated Figure - perspex with metal and electrical fittings - 'Peters Ice Cream' cone - some cracks & splitting/chips where perspex meets fastening arm - some joints have been glued - shows well & working condition (has not been electrically tested) - 82cm tall | Good | 750 - 1000 |
| 179 | Fire Mark - pressed copper - 'Queen Insurance' with a pictorial of a young Queen Victoria - 'Established in Liverpool, 1857' - original tarnished finish - 25cm X 27cm | Very Good | 225 - 275 |
| 180 | Fire Mark - pressed tin - 'Fire Insurance, Sydney' - pictorial of a hanging ram - a rare early Australian fire mark - some wear & marks - 26cm X 18cm | Very Good | 325 - 375 |
| 181 | Fire Mark - pressed copper - 'Birmingham' with a pictorial of a fireman in front of a vintage fire cart - 'Established in Birmingham in 1805' - original tarnished finish - 28cm X 26cm | Very Good | 225 - 275 |
| 182 | Australiana Desk Set - elaborate wooden plinth base mounted with an EPNS emu, egg & palm fronds - provision for 2 matching ink wells & quill rest - original condition - 29cm wide X 14cm deep X 29cm tall | Very Good | 325 - 375 |
| 183 | Quantity of Chocolate Moulds - pressed steel - includes cat, pigs, dog & chicken - 12 19cm long - an interesting lot | Very Good | 125 - 150 |
| 184 | Pair of Trophy Cups - both EPNS double handled cups - both relating to the 'Alsation Shepherd Dog Assn' 1929 & 1931 - 12.5cm & 17.5cm tall | Good | 60 - 80 |

Graham Lancaster Auctions - Auction 104 Catalogue - July 2021

| | | | |
|-----|-----------------------------------------------------------------------------------------------------------------------------------------------------------------------------------------------------------------------------------------------------------|-----------|-----------|
| 185 | Trophy Cups X 3 - all quality EPNS presented by 'Sunlight Soap, Lever Bros Ltd' - 3 different Sunlight prize cups with engraved floral design - 15.5cm - 21cm tall | Good | 200 - 250 |
| 186 | Pair of Rose Bowl Trophies - both EPNS, one has a wooden plinth base - large variety is the 'Presidents Trophy - Ipswich Show, 1926', other is smaller 'Barellan P.A. & I. Society, 1935', 16.5cm & 23.5cm tall | Good | 125 - 150 |
| 187 | Silver Trophy Cup - Australian silver hallmark - a very decorative double handled chalice presented by 'W.P. & A.A Roma, 1883, Won by Messrs Miles Fletcher & Co' - 20cm tall | Very Good | 600 - 800 |
| 188 | Silver Trophy Cup - hallmarked to side body - 'The Queensland Cup, Presented by The Queenslander Newspaper for the East Moreton Farmers Association, Brisbane, 1875' - finely engraved decoration - original tarnished finish - 16.5cm tall | Very Good | 400 - 500 |
| 189 | Carved Emu Egg - on a wooden plinth base with finial - an early well carved egg, one side features a kangaroo and emu 'On Strike'. Other side features a standing emu and a landscape scene - good original condition - 25.5cm tall | Very Good | 225 - 275 |
| 190 | Quantity of Needle Books - 9 various cardboard pictorial folders containing needles | Good | 75 - 100 |
| 191 | Bound Needle Books etc - 2 leatherette bound needle book, a 'Frigidaire' advertising tape measure & a 'Prudential' advertising pin holder - some minor marks & wear | Good | 60 - 80 |
| 192 | Ambulance Case & Cure All - tin plated 'Maw's Miniature Ambulance Case' with various contents & an EPNS quack cure all - 'Detroit, 1890' | Good | 125 - 150 |
| 193 | Victorian Combs - fine gilt metal combs - various styles and designs - 9cm - 13cm long | Good | 125 - 150 |
| 194 | Silver Perfume Flask - pocket shaped with removable stopper - made for '4711' cologne - 8cm wide & 6cm tall | Very Good | 80 - 120 |
| 195 | Needle & Cotton Caskets X 3 - 2 fancy brass needle caskets - one is 'W. Avery & Son', other is 'T. Johnson & Sons' - also, a bullet shaped cotton holder - 4.5cm - 7cm tall | Very Good | 225 - 275 |
| 196 | Novelty Needle Case - fine gilded metal in the form of an articulated butterfly made for 'W. Avery & Son, Redditch' - a rare piece of sewing memorabilia - 12.5cm X 6cm | Very Good | 400 - 500 |
| 197 | Needle Caskets X 2 - both elaborate gilded metal caskets - one is a folding book, 9.5cm X 6cm, other is 'The Revolving Needle Case, W. Avery & Son, Redditch' - 9cm x 5cm - both magnificent examples | Very Good | 250 - 350 |
| 198 | Traveling Light & Paperweight - small leather bound traveling light with brass fittings & a glass paperweight with a portrait of a French soldier? - 9cm diameter | Good | 60 - 80 |
| 199 | Traveling Ink Wells X 3 - one is a brass bottle shape, one is a leatherette violin case and other is a heavy metal ink stand for 'Business Student' - 'Bombay' - complete with milk glass wells - 7cm - 9cm | Good | 150 - 200 |
| 200 | Traveling Ink Wells X 3 - all leather bound - different varieties & shapes - 3-5cm tall | Good | 125 - 150 |
| 201 | War Time Xmas Cake Tins X 2 - one is brass - 'Christmas, 1914' with a portrait of a young Queen Mary. 13cm X 8.5cm - Other is tin with Aust Coat of Arms from 'The Australian War Contingent Association, London, 1915' - 15cm X 9.5cm - some minor marks | Very Good | 175 - 225 |
| 202 | Novelty Games X 4 - dice & ring games, both advertising 'Mcevoy Boots & Shoes' - also 2 Japanese tin plate spinning tops - 4.5cm - 5cm diameters | Very Good | 125 - 150 |
| 203 | Early Utensils X 3 - including a patented pickle fork, a figural button hook & an advertising spoon/cork screw - an interesting lot | Very Good | 75 - 100 |
| 204 | Jewellers Ring Guages X 2 - wooden knobbed ring sizer & a 'Standard' hoop of ring sizes an interesting pair | Very Good | 225 - 275 |
| 205 | Betel Nut Cutters X 2 - interesting pair of cast steel betel nut cutters - different varieties - 12cm & 17cm long | Very Good | 125 - 150 |
| 206 | Doulton Match Striker/Holder - 'Doulton Lambeth Silicone Ware' - match holder & striker in the form of a miniature cheese bell - attractive floral artwork - 8.5cm tall | Very Good | 125 - 150 |
| 207 | Advertising Vesta - brass book shaped vesta - 'Strike for Coyle's Central Hotel, Townsville' - some wear & minor marks - 4.5cm X 3.5cm diameter | Very Good | 125 - 150 |
| 208 | Novelty Money Box - miniature tin plate 'Singer Sewing Machine' - treadle mechanism - with decals - original locking key & coin slot atop - 13.5cm tall | Very Good | 225 - 275 |
| 209 | Snuff Horn & Pipe - polished animal horn snuff holder with silver mount with a 4.5cm crack to one side. Also, a clay smoking pipe with figural head of Lord Kitchener - stem has been broken & reglued | Fair | 80 - 120 |
| 210 | Travelers Sample & Shaving Brush - both a/w ceramic - one is a travelers sample of a 'Bratby & Hinchliffe' lightning stopper for bottles, 10cm tall. Other is a 'Safe Guard Shaving Brush by Maw, London', 8.5cm tall | Good | 125 - 150 |
| 211 | Vesta & Needle Holder - a nickle plated vesta in the form of a clenched fist & a brass novelty needle/cotton holder in the form of a pig - vesta, 6.5cm long, pig is 5cm long | Very Good | 200 - 250 |

Graham Lancaster Auctions - Auction 104 Catalogue - July 2021

| | | | |
|-----|--------------------------------------------------------------------------------------------------------------------------------------------------------------------------------------------------------------------------------------------------------------------------------------------------------------------------------------------------------|-----------|-------------|
| 212 | Smelling Salt & Lighter - silver figural smelling salt container, 4cm tall & an elaborate agate & silver ladies cigarette lighter, 4.5cm tall | Very Good | 75 - 125 |
| 213 | Stamp Holders X 2 - one is a brass Gladstone bag - 'Perry & Co, London', 4cm long - other is a bakelite suitcase, 6cm long | Good | 75 - 125 |
| 214 | Novelty Tins X 2 - both 'Cachous' tins - one is 'Rowntree's', 11cm long in the form of a cricket bat, other is 'Clarnico' golf club, 14cm long - some wear & marks | Good | 125 - 150 |
| 215 | Advertising Paperweight & Cyclist Cup - cast brass in the form of a wheelbarrow - 'Kelso' - 12.5cm long & a nickle plated telescopic 'Cyclist Cup' | Very Good | 100 - 150 |
| 216 | Novelty Tins X 2 - both 'Cachous' tins in the form of cricket bats - one is 'Rowntrees', other is the very rare 'Anthony Horden's' (Sydney) - both 11.5cm long | Very Good | 225 - 275 |
| 217 | Pocket Rotoscope & Magnifying Glass - tin plate pocket 'Rotoscope' with various scenes of New Zealand & actresses - 7.5cm & a mini three fold magnifying glass - 'Wallace Hirst & Co, Brisbane' - 2.5cm tall | Very Good | 125 - 150 |
| 218 | Novelty Calendar - nickle plated daschund containing 4 dice to change day, date & month original & tarnished - 14cm long | Very Good | 80 - 120 |
| 219 | Tea Billy & Tin - round 'Bushells' tea billy with original lid & handle. Also a cylindrical tea tin made from 'Bushells Tea' tin sheets - very unusual | Good | 225 - 275 |
| 220 | Advertising Calendar & Powder Tin - an unusual tin plate calendar advertising 'Keplar Cod Liver Oil' - complete with movable calendar mechanism - 19cm tall & an unusual 'Glove Powder' sprinkler tin with large Coat of Arms - 12cm tall | Very Good | 175 - 225 |
| 221 | Tea Caddy - 'Bushells Tea, Souvenir of the Opening of Federal Parliament, 1927' - pictorials of the Duke & Duchess of York with original pictorial lid - lovely condition - 18 5cm tall | Very Good | 225 - 275 |
| 222 | Group of Scrimshaw - A combination of real tusks & teeth, along with reproduction resin examples | Good | 225 - 275 |
| 223 | Group of Scrimshaw - A combination of real tusks & teeth, along with reproduction resin examples | Good | 225 - 275 |
| 224 | Rustic Dough Bin - very early colonial wooden dough bin made from a single piece of timber - with handles - heavily worn with cracks & holes - full of character & patina - 76cm X 41cm wide | Very Good | 200 - 250 |
| 225 | Lithgow Water Filter - 4 gallon - impressed kangaroo stamp - tall cylindrical water filter with double handles & spigot hole - decorative coggle banding with no lid, crazing & fine glaze lines mostly to rear body - 38cm tall | Very Good | 325 - 375 |
| 226 | Pottery Money Box - u/m brickworks money box in the form of a jolly man with mouth as coin slot - head has been broken off and reglued & some chips to base edge have been restored - 18.5cm tall | Repaired | 225 - 275 |
| 227 | Lithgow Jelly Mould - imp. 'Lithgow' stamp to base - 'Pineapple' design in a soft brown drip glaze - lovely condition with minor marks - 14cm X 18cm X 10cm tall | Very Good | 150 - 175 |
| 228 | Lithgow Jelly Mould - imp. kangaroo stamp to base - large jelly mould in an 'Arcaded' pattern in a dark Rockingham glaze - some shallow chips to base edge, otherwise very clean - 17cm X 22cm X 12cm tall | Good | 125 - 175 |
| 229 | Lithgow Storage Jar - extremely rare large 'Lithgow' kangaroo stamp to side body - a beautifully wheel thrown jar in a deep copper glaze - no lid but excellent condition - the first time we have offered a piece of Lithgow with this rare early stamp - 23.5cm tall | Very Good | 2500 - 3500 |
| 230 | Wunderlich Garden Ornament - initials to base, but attributed to 'Wunderlich' - a wonderful press moulded and hand built figure of a turtle in salt glaze & highlighted eyes - some chips to feet & edge of shell - an unusual and rare item - 32cm long X 20cm wide | Very Good | 250 - 300 |
| 231 | Gilson Storage Jar - imp. 'J. Gilson, Pioneer Pottery, Kleinton Q' to shoulder - a stunning wheel thrown storage jar with a dark orange peel glaze and coggle decoration to shoulder no lid, but lovely condition with 3 shallow flakes to lip rim - 31cm tall | Good | 350 - 450 |
| 232 | Convict Era Jar - imp. 'J. Sherwin' near base edge - an exceptionally rare small size 'Sherwin' bung jar with two tone glaze with the trademark Tasmanian rolled lip. Some minor flakes to base edge, crazing & fine lines to body - a fine internal hairline emanating from rear lip rim, 35mm inside. The first example we have offered, 13.5cm tall | Very Good | 1750 - 2250 |
| 233 | Mantle True Dog - u/m 'Brickworks' pottery - classic figure of a spaniel in a spotted caneware glaze - some shallow chips to base edge, otherwise excellent - 25cm tall | Good | 175 - 225 |
| 234 | Reliance Pottery Demijohn - imp 'Bognuda, Hudson & Co, Reliance Pottery, Dinmore' to shoulder - wonderfully crude salt glaze jar with big splashes of glaze dripped over shoulder - a couple of minor glaze flakes to shoulder & 2 shallow chips to underside of base edge - a rare piece of Ipswich pottery - 26cm tall | Good | 500 - 600 |

Graham Lancaster Auctions - Auction 104 Catalogue - July 2021

| | | | |
|-----|---------------------------------------------------------------------------------------------------------------------------------------------------------------------------------------------------------------------------------------------------------------------------------------------------------------------------------------------------------------------------------------------------------|-----------|-------------|
| 235 | Cornwalls Bread Plate - u/m but attributable - round press moulded bread plate with stylised handles, embossed lettering & wheat sheaves - 'Give Us This Day Our Daily Bread' - yellow & brown glaze on cream - some signs of use with a fine star stress line to underside & a 25mm fracture to underside near handle - 29cm diameter | Very Good | 750 - 1000 |
| 236 | Stones Bread Plate - u/m but attributable to 'Charles Stone, Coorparoo' - round plate with embossed edge, lettering & wheat sheaves - blue, green, yellow & white glaze on speckled tan - some old chips and flakes to edge and artwork - plate has been broken in 2 pieces and crudely glued together from handle to 'T' of 'This' - an extremely rare bread plate, worthy of professional restoration | Damaged | 400 - 600 |
| 237 | Lithgow Bread Plate - kangaroo stamp to base - magnificent small size oval plate with handles & embossed lettering - 'Give Us This Day Our Daily Bread' in a multicoloured dabbled majolica glaze - lovely condition minor marks - 29cm X 20cm | Very Good | 800 - 1200 |
| 238 | Lithgow Comport - imp. kangaroo stamp to base - round leaf plate on a squat comport base featuring vine leaves - a soft green glaze in stunning condition - 25cm diameter | Very Good | 800 - 1200 |
| 239 | Lithgow Bread Plate - u/m but easily attributable - large oval plate with embossed lettering & wheat sheaves - 'Give Us This Day Our Daily Bread' - blue & cream majolica mottled glaze on tan - some signs of use & minor glaze ware to rim & lettering - a very attractive plate - 36cm X 25cm | Very Good | 1250 - 1500 |
| 240 | Cornwalls Bread Plate - u/m but attributable - round plate with handles, embossed lettering & wheat sheaves - 'Give Us This Day Our Daily Bread' - striking cobalt blue & multicoloured majolica glaze on white - some discoloured crazing & 3 fine stress hairlines running from outer edge to the underside - the best glaze we have seen for 'Cornwalls' plate - 30cm diameter | Good | 750 - 1000 |
| 241 | Kingsware Tobacco Jar - stamped 'Royal Doulton' to base - large smoking pipe shaped tobacco jar with lid & sterling silver mounts - an embossed scene of 2 gentlemen smoking some crazing & marks - originally from the 'Lansell Home, Fortuna, Bendigo' - 30cm tall | Very Good | 1200 - 1500 |
| 242 | Kangaroo Jug - imp. 'Royal Doulton' to base - a magnificent handled jug with embossed kangaroos in a landscape scene - a large piece of Doulton artware made for the Australian market - extremely rare & desirable - 18.5cm tall | Very Good | 2250 - 2750 |
| 243 | Boer War Jug - imp. Doulton Lambeth to base - large two tone handled jug - transferred 'South Africa, 1900' - featuring army generals, kangaroo, ostrich & a beaver - some minor glaze flakes have been retouched | Good | 250 - 350 |
| 244 | William Moorcroft Vase - early signature to base - large bulbous based vase with tall flared neck, striking multicoloured fruit design - 'Wisteria Plum' pattern on a cobalt blue background - 19.5cm tall | Very Good | 400 - 600 |
| 245 | Moorcroft Vase - stamped to base 'Australian Series, 2015' - an exceptionally tall elegant vase featuring 'Major Mitchell Cockatoos' amongst gum leaves and blossoms - Ex. Trevor Kennedy collection - 42cm tall | Very Good | 2250 - 2750 |
| 246 | Crown Devon Musical Jug - an impressive slip-cast jug with kangaroo as handle and Advance Australia Fair - featuring Captain Cook to one side & Aborigines to other - 1 ear and tail of kangaroo have been restored, there has also been restoration to spout, base edge & body - still shows well, but has no musical mechanism - 23cm tall | Repaired | 225 - 275 |
| 247 | Glass Koala Vase - a light amber depression glass vase featuring koalas to both sides and handles - finished with a square base which sits on an elegant black glass plinth - exceptional quality, possibly made by the 'Crown Crystal Glass Company' - 22cm tall | Very Good | 800 - 1200 |
| 248 | Federation Bon Bon Dish - pressed brilliant blue glass lidded comport - 'Australia's Centenary, 1888' featuring the Aust. Coat of Arms & rising sun. A small fractured bruise to base of comport shallow flake to lid rim - rare piece of Centenary glassware - 21cm tall | Very Good | 400 - 600 |
| 249 | Don Bradman Jugs X 2 - both Japanese 'Marutomo Ware' - slip-cast face jugs in the form of Donald Bradman with cricket bat handles & multicoloured glaze - some crazing & minor marks - one is 14cm tall, other is 10.5cm with a fine 20mm hairline emanating from rim | Good | 125 - 175 |
| 250 | William Moorcroft Vase - early signature to base - ball shaped vase with flared neck & rim 'Leaf & Berry' design on a cobalt blue glaze - 15.5cm tall | Very Good | 350 - 450 |
| 251 | Moorcroft Vase - 'Australian Series, 2009' - an attractive baluster shape vase with flared rim in the 'Cooktown Orchid' pattern - an attractive limited edition - 16cm tall | Very Good | 225 - 275 |
| 252 | Moorcroft Vase - imp. stamp to base - small ball shaped vase with flared rim - 'Iris' pattern on cobalt blue - 9.5cm tall | Very Good | 200 - 250 |
| 253 | William Moorcroft Vase - early signature to base - ovoid vase with a rolled rim in 'Leaf & Berry' pattern - 8.5cm tall | Very Good | 175 - 225 |
| 254 | Moorcroft Vase - stamped to base - medium ovoid vase with flared rim - 2008 trial pattern, 'Shepherd's Delight' - 13.5cm tall | Very Good | 200 - 250 |

Graham Lancaster Auctions - Auction 104 Catalogue - July 2021

| | | | |
|-----|------------------------------------------------------------------------------------------------------------------------------------------------------------------------------------------------------------------------------------------------------------------------------------------------------------------------------------------------------------------------------------------------------------------------------------------|-----------|-------------|
| 255 | Early Union Club Plate - English ceramic - a very attractive scalloped dinner plate with floral border & kangaroo/emu to centre - 'Union Club, Ships Colonies & Commerce' - a rare early piece from the 'Tasmanian Union Club' - 22.5cm diameter | Very Good | 1000 - 1250 |
| 256 | Don Bradman Jugs X 2 - both Japanese 'Marutomo Ware' slip-cast face jugs depicting Donald Bradman with cricket bat handles - one has a green cap, other has a rusty tan cap with shallow flake to underside of base edge - both have discoloured crazing & minor marks - 14cm tall | Very Good | 175 - 225 |
| 257 | Stones 'Bradman' Jug - stamped 'Novelty Cricket Jug, 1934, Bristol Pottery, Brisbane' - an exceptionally rare slip-cast figural jug in the form of Don Bradman with a cricket bat handle & green cap - great condition - 13.5cm tall | Very Good | 1250 - 1500 |
| 258 | Stones 'Bradman' Jug - u/m but easily attributable - another very rare slip-cast figural jug in the form of Don Bradman with a handle - all white glaze with 2 small shallow chips to lip rim. The first all white variety we hve seen - 13.5cm tall | Very Good | 400 - 500 |
| 259 | Stones Souvenir Vase - u/m but easily attributable - a unique marbled & swirled glaze in blue, green & white on mustard - transferred shield 'Souvenir of the visit to Brisbane, The Duke of Gloucester' - extremely rare & unusual - 17cm tall | Very Good | 400 - 500 |
| 260 | Stones Souvenir Vase - stamped 'Chas A. Stone & Sons, Bristol Pottery, Coorparoo' to base - tall cylindrical vase with flared base in a maroon & mottled mauve glaze - transferred shield - 'Souvenir of the Visit to Brisbane, The Duke of Gloucester, 1934' - another rare & unusual piece of 'Stones Pottery' - 17cm tall | Very Good | 350 - 450 |
| 261 | Stones Friar Jug - u/m but easily attributable - classic milk jug in the form of a friar with mulberry black & tan highlights on cream - some minor imperfections - 19cm tall | Very Good | 400 - 500 |
| 262 | Stones Souvenir Trivet - stamped 'Chas. A Stone & Sons, Bristol Pottery, Coorparoo' to base - round footed trivet with a mulberry & mauve speckled border & a transferred shield on top - 'Souvenir of the Visit to Brisbane, The Duke of Gloucester, 1934' - another very rare piece of 'Stones Pottery' - 16cm diameter | Very Good | 500 - 600 |
| 263 | Stones 'With Compliments' Jug - u/m tapered milk jug with blue band and black transfer - 'With Compliments from Pierpoint & Sons, Stanthorpe' - some hairlines to body have been disguised - 15cm tall | Repaired | 300 - 400 |
| 264 | Stones 'With Compliments' Jug - u/m tapered milk jug with blue band and black transfer - 'With Compliments from J.W. Matthews, General Provider, Mulgeldie' - some hairlines to body have been disguised - 13.5cm tall | Repaired | 300 - 400 |
| 265 | Stones 'With Compliments' Jug - u/m tapered milk jug with black transfer - 'Trezise, Cash & Carry, Dalby, 1937, Second Anniversary' - very clean - a fine 20mm hairline emanating from rim into badge - 11cm tall | Good | 250 - 350 |
| 266 | Stones 'With Compliments' Jug - u/m handled milk jug with black transfer - 'With Compliments from T. Waller, Forest Hill' - glaze has discoloured with a fine 15mm hairline emanating from rim - 12cm tall | Good | 225 - 275 |
| 267 | Stones 'With Compliments' Jug - u/m tapered milk jug with blue band and black transfer - 'With Compliments from 'Peter A. Rauchle, General Storekeeper, Pittsworth' - hairlines to body have been restored - 14.5cm tall | Repaired | 225 - 275 |
| 268 | Stones With Compliments Jug - u/m - greyhound handle in a cream glaze with black transfer - 'With Compliments from McKenzie & Co, Goondiwindi' - some light glaze discolouration with a 5mm nibble to spout & some stress lines emanating from base - 13 5cm tall | Good | 300 - 400 |
| 269 | Stones Kangaroo Teapot - imp. 'Bristol Pottery, Brisbane' to base - rich maroon glaze - iconic figural teapot in the form of a kangaroo with a branch knob to lid - an exceptionally rare example with applied badge - 'Bristol Pottery Brisbane Exhibition, 1922' to side body - some restoration to ears and spout, lid has been replaced - as featured on page 187 of 'With Heart & Hand, Griffith University Art Museum' - 14cm tall | Good | 4000 - 5000 |
| 270 | Stones 'With Compliments' Jug - imp. 'Brisbane Pottery, Bristol' to base - ball shaped milk jug with handle & applied seal - 'See Poy & Sons, Merchants, Innisfail' - body has wear with a fine hairline to underside of base edge & some small nibbles to rim and spout - early & rare, 13cm tall | Good | 325 - 375 |
| 271 | Stones Exhibition Vase - imp. 'Bristol Pottery, Brisbane' to base - a small waisted vase in cream glaze with a blue applied seal - 'Bristol Pottery Brisbane, Exhibition, 1922' to side body - a chip to rear base and rear lip rim have been amateurishly restored - 12cm tall | Good | 225 - 275 |
| 272 | LJ Harvey Figurine - incised 'L.J. Harvey' to reverse - impressed figure - 'Old Everything of James Campbell & Son Limited' - an iconic piece of Stones pottery in lovely condition | Very Good | 1000 - 1250 |
| 273 | Stones 'With Compliments' Butter Dish - all white glaze with a blue handle & a black transfer - 'With Compliments from T. Mewing & Sons, 1936-7' - very clean - 17cm X 14cm | Very Good | 250 - 350 |
| 274 | Stones 'With Compliments' Lidded Bowl - u/m - a/w with black transfer - 'With Compliments from T. Mewing & Sons, 1935-6' - some minor marks - 18cm diameter | Very Good | 325 - 375 |

Graham Lancaster Auctions - Auction 104 Catalogue - July 2021

| | | | |
|-----|---------------------------------------------------------------------------------------------------------------------------------------------------------------------------------------------------------------------------------------------------------------------------------------------------------------------------------------------------------|-----------|---------------|
| 275 | Stones Figurine - u/m - a well modelled slip-cast foal in autumn tones on a mottled green plinth base - a rare piece of 'Stones Pottery' - 16cm tall | Very Good | 275 - 325 |
| 276 | Stones Ashtray - maroon glaze slip-cast ashtray - embossed 'Roy C. Stone, Xmas 1950' - very clean with a small flake to base edge - 17cm X 12.5cm | Very Good | 275 - 325 |
| 277 | Stones Figurine - a unique hand built figure of a seated gentleman with monkey - (possibly Charles Stone himself) in a soft blue/grey glaze - imp. 'Chas. A Stone, Earth'ware Manufact'r, Bristol Pottery Works, Coorparoo, Brisbane' - a unique and important piece of 'Stones Pottery' with some minor marks - 12.5cm tall | Very Good | 1250 - 1500 |
| 278 | Stones Figurine - slip-cast figure of a boy on a plinth base - 'Tired Tim from Stones Pottery' - lower legs and plinth base have been rebuilt, but some minor marks - 14cm tall | Repaired | 300 - 400 |
| 279 | Stones Cream Jug - stamped 'Bristol Pottery, Brisbane' to base - unusual slip-cast cream jug on 4 feet - moulded from the pouring spout of 2 friar milk jugs - multicoloured hand painted glaze - another very rare piece of Stones Pottery - 8.5cm tall X 12cm wide | Very Good | 500 - 600 |
| 280 | Stones Figurine - slip-cast figure of a boy on a plinth base - 'Tired Tim from Stones Pottery I'se Not Charlie Stone, Though I Come From Stones Pottery' - lower legs and plinth base have been rebuilt, but some minor marks, head has been reglued & touched up, base has been restored - 14cm tall | Repaired | 300 - 400 |
| 281 | Fowler Kiln Ashtray - 'Huntress' stamp to base - slip-cast ashtray in the form of a pottery kiln - a soft green glaze with black transfer - 'Fowler Potteries', 15cm tall | Very Good | 125 - 150 |
| 282 | Tambourine Pottery Trivet & Vase - an unusual stylised turtle trivet & a hand built agate ware vase - both have hand painted indigenous designs - trivet, 18cm diameter, vase, 10cm tall | Very Good | 80 - 120 |
| 283 | Bosley Freddo Frog - imp. 'Made by T.G. & A.C. Bosley, Mitcham, South Aust' to base - wonderful large slip-cast green frog with yellow breast - advertising 'MacRobertson's Freddo Frogs' - some touch-ups to base of toes & extremities have been very well restored - an iconic piece of Australian advertising, now impossible to find - 20.5cm tall | Very Good | 15000 - 17500 |
| 284 | Phillipa James Vase & Jug - both signed to base - an elegant tall cylindrical vase in a pleasant teal glaze - 16cm tall & a small handled jug in a soft blue, 7.5cm tall | Very Good | 300 - 400 |
| 285 | Pair of Wembley Ware Bookends - both have foil stickers - classic Art Deco bookends featuring naked ladies with their legs high in the air, in a pearl white lustre glaze - 28cm tall | Very Good | 600 - 800 |
| 286 | Diana Musical Jug - classic 'Waltzing Matilda' jug in a multicoloured glaze with a scarce blue background - a shallow 10mm flake to side base edge & musical mechanism is missing - 19.5cm tall | Very Good | 175 - 225 |
| 287 | Diana Jugs X 2 - u/m - both classic 'Waltzing Matilda' jugs - large & small variety with typical green backgrounds - nice condition but no musical mechanisms - 11.5cm & 19.5cm tall | Very Good | 200 - 250 |
| 288 | Diana Musical Jug - classic 'Waltzing Matilda' jug - rare variety with a yellow background - complete with working musical mechanism - 21cm tall | Very Good | 225 - 275 |
| 289 | Exhibition Glassware X 4 - 3 drinking glasses & a jug - all etched 'Adelaide Exhibition' (1925, 1930 & 1947) with kookaburras, kangaroos, thistle & flannel flowers - 6-11cm tall | Very Good | 80 - 120 |
| 290 | Souvenir Cups & Saucer - ruby glass handled cup - 'A Present from Brisbane' - 8.5cm tall & a ceramic cup & saucer with black transfer - 'The Kiosk, Brisbane' - 5.5cm tall | Very Good | 100 - 125 |
| 291 | NZ Exhibition Glass - Tumbler, - 'Dunedin Exhibition, 1889-90', 11cm tall & a butter dish, 'NZ Centennial Exhibition, 1940', 11cm diameter | Very Good | 60 - 80 |
| 292 | Souvenir Ashtray & Paperweight - Australian Pottery deco ashtray - 'Souvenir, Cronulla', 19.5cm long - glass paperweight of Sydney Harbour Bridge, 14cm long | Very Good | 80 - 120 |
| 293 | Souvenir Glasses X 2 - glass tumbler - 'Tasmanian International Exhibition, Hobart 1944-5' featuring exhibition buildings - 11cm tall & an early handled tankard, 'Centennial Exhibition 1888' decorated with fern leaves- 13.5cm tall | Very Good | 125 - 150 |
| 294 | Trent Ashtray - incised 'D.V. Merton' to base - an attractive slip-cast ashtray with 2 kookaburras atop - multicoloured autumn glazes - 1 beak has been restored - 13cm long | Very Good | 250 - 300 |
| 295 | Trent Ashtray - stamped 'Trent Artware' to base - attributed to Daisy Merton - a different slip glazed ashtray with large kookaburra atop - 16cm long | Very Good | 250 - 300 |
| 296 | Mashman Frog - small frog in a soft green glaze with dark green highlights and big wide eyes - 5.5cm tall | Very Good | 80 - 120 |
| 297 | Tiny Bosley Frogs - pair of u/m Bosley frogs with a green glaze & highlights to eyes & chest - some minor marks - 3.5cm tall | Very Good | 125 - 150 |
| 298 | Pair of McCredie Bookends - incised 'McCredie, NSW' to base - a mirrored pair of slip cast bookends in the form of koalas holding onto tree trunks - grey & tan drip glaze on green with black highlights - 13.5cm & 14.5cm tall | Very Good | 1250 - 1500 |

Graham Lancaster Auctions - Auction 104 Catalogue - July 2021

| | | | |
|-----|----------------------------------------------------------------------------------------------------------------------------------------------------------------------------------------------------------------------------------------------------------------------------------------------------------------------------------------------------------------------------|-----------|-------------|
| 299 | Daisy Merton Trough Vase - signed 'D.V. Merton' to base - fine slip cast vase in the form of a log with an Australian parrot perched atop - beautifully soft multicoloured glazes - 24 5cm long | Very Good | 500 - 600 |
| 300 | Trent Candle Stick - u/m but attributed to Daisy Merton - a slip-cast stylised candle stick with a well modelled koala atop - multicoloured autumn gazes - a rare piece - 14.5cm long | Very Good | 225 - 275 |
| 301 | Chamber Pot - English Ceramic with a blue geometric fleur-de-lis design - 'Commercial Travellers Club' with monogram - some minor marks - 23cm diameter | Very Good | 225 - 275 |
| 302 | Giant Chamber Pot - English Ceramic - blue & white floral design - a huge shop display advertising piece - 33cm diameter X 20cm tall | Very Good | 600 - 800 |
| 303 | Chamber Pot - English ceramic with a blue geometric fleur-de-lis design - 'Melbourne Club' with a swan t/m - very clean with some minor marks - 23cm diameter | Very Good | 325 - 375 |
| 304 | Pair of Mixing Bowls - English ceramic made for the 'Mutual Store Ltd' - both have different blue & white designs - one is willow pattern, other is floral with birds - both 16cm diameter | Very Good | 125 - 150 |
| 305 | Sample Hand Basins X 2 - a/w ceramic sample hand basins - one is 'J. Tylor & Sons, London & Sydney' - 22cm X 18cm, other is 'The Regenis', 15.5cm X 11cm - some minor marks | Very Good | 225 - 275 |
| 306 | Sample Toilet - stunning early travelers sample ceramic toilet with multicoloured floral design - 'Johnson Bros, Hanley' - mounted on a wooden base - a shallow flake to toilet seat lug has been retouched - 13.5cm tall | Very Good | 750 - 1000 |
| 307 | Sample Toilet - Doulton a/w ceramic toilet with a fancy embossed pattern & lead joint to water outlet - damage to bottom edge has been competently restored - 10.5cm tall | Good | 325 - 375 |
| 308 | Sample Toilet - stunning early travelers sample ceramic toilet in a rich multicoloured floral design - 'Invictas, Johnson Bros, Hanley' - restoration to base edge has lightly discoloured - 13.5cm tall | Good | 500 - 600 |
| 309 | Sample Electric Jug - soft yellow glaze with a maroon speckled bakelite lid - 'Junior Esco' - lovely condition - 9.5cm tall | Very Good | 225 - 275 |
| 310 | Finney Isles Tray & Creamer - burnished metal change tray featuring 'The Brisbane Store' & a small terracotta cream jug - 'Finneys, The House of Quality' - both advertising pieces for 'Finney Isles' - 12cm X 9cm (tray) - creamer, 14cm tall | Mint | 80 - 120 |
| 311 | Advertising Roller Tray - English ceramic bowl transferred 'Stephens Inks' complete with brass roller, used for blotting - 18cm X 10cm long | Very Good | 225 - 275 |
| 312 | Souvenir Cup & Saucer - English ceramic - 'Souvenir of the Opening of the Chinchilla Ambulance Branch, 1928' - 7.5cm tall | Very Good | 80 - 120 |
| 313 | Ceramic Weights X 5 - 4 'Avery' ceramic weights - 2lb, 1lb, 8oz. & 4oz. Largest has been repaired. Also, an advertising weight 'Geo. Smith & Co, Gresham House' | Good | 325 - 375 |
| 314 | Advertising Jug & Ashtray - both ceramic - small 'Beacon Tomato Sauce, Geelong' jug with a tiny restored lip flake to rear rim, 5cm tall and an ashtray in the form of mouth with teeth - 'Commonwealth Dental Supplies', 9cm diameter | Good | 80 - 120 |
| 315 | Paperweight & Ashtray - pyramid shape with barrel atop - 'Hoskins & Carmichael' (Brisbane) - some restored chips to sharp corners - 6cm tall. Also, a hand painted 'Stones Ashtray' featuring the 'Grey Street Bridge', 11cm diameter | Very Good | 125 - 150 |
| 316 | Advertising Paperweight & Change Tray - both ceramic - one is a figure of a boot on a plinth base - 'Bootes Tiles' - 12cm long. Also a boater hat shaped change tray - 'Reslaw Hat' - 16cm X 15cm, some wear & minor marks | Good | 100 - 125 |
| 317 | Grimwades Mould & Spoon - both a/w ceramic with green transfers - 'The Paragon, Blanc Mange & Jelly Mould' - 13.5cm diameter. Also, a small cream skimmer & spout cover - 8cm X 9cm | Good | 125 - 150 |
| 318 | Milk Boiler - a/w ceramic with black transfer - 'The Eddystone Milk Boiler', 15cm tall | Very Good | 175 - 225 |
| 319 | Milk Boiler - a/w ceramic with black transfer - 'The Cascade Boiler' with belt buckle design minor marks - 11.5cm tall | Very Good | 175 - 225 |
| 320 | Sample Water Jugs X 2 - both English ceramic flat travelers sample water jugs (from jug & basin set) - one is an Art Deco design, 25cm tall. Other is an Asiatic scene, 18cm tall | Very Good | 250 - 350 |
| 321 | Ice Cream Cone Server - a/w ceramic with black transfer - 'The Orlwite Biscuit Cone Server' - a rare piece of kitchenalia, 'Facchino's Biscuit Co, Birmingham' - 13cm tall | Very Good | 225 - 275 |
| 322 | Quick Cookers X 2 - both 'Grimwades Quick Cookers' comprising of pudding bowls with lids - a/w with green transfer - one is 7" size, other is 5.5" size | Very Good | 200 - 250 |
| 323 | Waratah Umbrella Stand - 'Minton, England' - a sensational Art Nouveau umbrella stand with magnificent tube line & hand painted decoration featuring 3 giant waratahs - striking multicoloured glaze - some crazing & fine lines emanating from rim to interior - remarkable condition with a small patch of flaked glaze to bulbous base - exhibition quality - 57cm tall | Very Good | 2250 - 2750 |

Graham Lancaster Auctions - Auction 104 Catalogue - July 2021

| | | | |
|-----|----------------------------------------------------------------------------------------------------------------------------------------------------------------------------------------------------------------------------------------------------------------------------------------------------------|-----------|-------------|
| 324 | Pair of Giant Mantel Spaniels - a magnificent pair of mirrored tan glaze spaniels sitting on multicoloured majolica plinth bases - finest Scottish quality - one has a hairline crack emanating from rear base edge up over hind quarter near tail, some other minor glaze flakes and crazing. 43cm tall | Good | 1250 - 1500 |
| 325 | Bosley Garden Ornament - u/m but easily attributable - life-size model of a kookaburra in brown, cream & green glaze - a shallow chip to base of tail - 21cm tall | Very Good | 225 - 275 |
| 326 | Giant Bendigo Figurine - u/m but easily attributable - almost life-size model of a koala holding onto a gum branch - brown and white drip glaze with black & green highlights - a sensational high gloss example in stunning condition - 37.5cm tall | Very Good | 2250 - 2750 |
| 327 | Bendigo Garden Ornament - u/m but easily attributable - a life-size figure of a kookaburra sitting on a branch on tan & white drip glaze with black highlights. Lovely condition & great colours - 22cm tall | Very Good | 400 - 500 |
| 328 | Bendigo Electric Jug - u/m unique shaped hot water jug in a striking multicoloured majolica glaze with original sliding bakelite lid - very rare & most attractive - 21.5cm tall | Very Good | 750 - 1000 |
| 329 | Electric Face Jug - a/w ceramic with brown mottled glaze with a sliding matching lid - lovely condition - 23cm tall | Very Good | 500 - 600 |
| 330 | Bendigo Electric Jug - u/m but easily attributable - an elegant fluted jug with original bakelite lid in a striking multicoloured majolica glaze - some crazing & minor marks - 21.5cm tall | Very Good | 325 - 375 |
| 331 | Electric Face Jug - cream ceramic with white mottled glaze - sliding matching lid - lovely condition - 23cm tall | Very Good | 500 - 600 |
| 332 | Giant Bendigo Figurine - u/m well modelled figure of a seated spaniel - orange, tan highlights on a cream glaze - very hard to find - 33cm tall | Very Good | 750 - 1000 |
| 333 | Landscape Vase - signed 'S. Harding'? to base - fine ovoid vase with hand painted Australian bush scene featuring gum trees & mountains - some wear & minor marks - 12.5cm tall | Very Good | 80 - 120 |
| 334 | Flora Landells Vase - incised 'Landells, Perth' to base - medium tapered wheel thrown vase with silver & pale blue grape decoration on a rich cobalt background - striking Art Deco piece from one of West Australia's best ceramic artists - 18.5cm tall | Very Good | 225 - 275 |
| 335 | Jolliffe Teapot - incised 'Hand Built by Jolliffe, 1935' to base - very unusual stylised teapot with sweeping branches, gum leaves & blossoms on lid - 10.5cm tall | Very Good | 1250 - 1500 |
| 336 | Merric Boyd Jug - incised 'Boyd' to base - a magnificent handbuilt jug with sweeping branch handle with embossed vine leaves & grape decoration - green washed glaze with darker highlights - a unique & attractive piece - 17.5cm tall | Very Good | 750 - 1000 |
| 337 | Merric Boyd Vase - incised 'Boyd, 1931' with gum leaf to base - a beautifully wheel thrown waisted vase with stylised hand painted landscape decoration - rich blue, green, brown & black glaze - 10.5cm tall, 13cm diameter | Very Good | 600 - 800 |
| 338 | Violet Mace Vase - a fine wheel thrown squat vase with hand painted Art Nouveau decoration of gum leaves & nuts on a mottled blue background - has been used with discoloured crazing & minor marks - a striking piece from this Tasmanian artist - 9cm tall X 16cm diameter | Very Good | 400 - 500 |
| 339 | Merric Boyd Vase - incised 'Merric Boyd, 1943' to base - fine wheel thrown vase with embossed gum leaf & nut decoration - a soft blue glaze on a grey background - a classic Boyd vase with a fine star hairline to underside of base edge - 11cm tall | Good | 500 - 750 |
| 340 | Remued Jug - incised 'Remued, 118M' to base - an attractive bulbous based jug with flared rim, stylised handle, applied gum leaf & nuts, yellow drip glaze on green - 11cm tall | Very Good | 175 - 225 |
| 341 | Pamela Jug - incised 'Pamela, Handmade, 1934' to base - a fine cylindrical jug with flared rim, stylised handle & large applied gum leaf/nut - green drip glaze on deep pink - a very fine 35mm hairline emanating from rear lip rim - 12.5cm tall | Very Good | 350 - 450 |
| 342 | Remued Jug - incised 'Remued, Hand Made, 53' to base - tall, bulbous based jug with flared rim, handle & 2 applied gum leaves & nuts - a pink & blue drip glaze on lime green - most attractive & a good size - 19.5cm tall | Very Good | 500 - 600 |
| 343 | Remued Vase - incised 'Remued' to base - small ball shaped vase with flared rim, applied branch handle, gumnuts & leaf - green, yellow & fawn drip glaze on tan - 8.5cm tall | Very Good | 175 - 225 |
| 344 | Remued Koala Jug - incised 'Remued' to base - squat bulbous jug with oversized spout, stylised branch handle & applied koala - a beautiful green washed glaze - rare - 9.5cm tall | Very Good | 500 - 750 |
| 345 | Cruffle/Boyd Vase - u/m but typical 'Cruffle Ware' - a very fine wheel thrown vase with an applied koala to rim - green & grey drip glaze on blue - 10cm tall | Very Good | 325 - 375 |
| 346 | Miniature Bricks - approximately 15 brickworks, terracotta & lead sample bricks - different brands & ages | Very Good | 225 - 275 |

Graham Lancaster Auctions - Auction 104 Catalogue - July 2021

| | | | |
|-----|-------------------------------------------------------------------------------------------------------------------------------------------------------------------------------------------------------------------------------------------------------------------------------------------------------------------------------------------------------------------------------------------------|-----------|---------------|
| 347 | Campbell Pottery Miniatures X 3 - u/m 'James Campbell Pottery, Brisbane' traveling salesman samples comprising of a water monkey, wine cooler & butter cooler - all have base plates & monkey has stopper - a rare & unique set - 6.5cm - 15cm tall | Very Good | 600 - 800 |
| 348 | Brickworks Tobacco Jar - u/m but attributed to 'Kleinton Pottery' - wheel thrown and hand worked tree trunk vase with matching lid & dedication to 'T.W. Pocock' - some shallow flakes to rim and lid edge - beautiful quality - 11.5cm tall | Very Good | 225 - 275 |
| 349 | Harvey School Lidded Box - incised with 'Jessie Woodroffe, Monogram, 1924, Brisbane' to base - square slab built divided box with matching lid featuring a stylised handle - a rich cobalt blue glaze - 17cm X 17cm | Very Good | 175 - 225 |
| 350 | Harvey School Frog Bowl - incised 'M. Thornley, Q. 1937' to base - pleasant oval shallow bowl with stylised branch handles, applied leaves & berries with a lovely green frog sitting on the rim - 15cm long X 10cm wide | Very Good | 350 - 450 |
| 351 | LJ Harvey Figurine - signed 'L.J. Harvey, 1922, Q' to rear - this is the prototype original 'Old Cheerio' hand modelled by the master himself - later these were slip-cast as an advertising piece for James Campbell - beautiful detail & finely hand painted in multicolours - 15cm tall | Very Good | 3500 - 4500 |
| 352 | Harvey School Figurine - signed 'Maud O'Reilly, Kookaburra, 1926' to base - slip-cast model of a life size kookaburra sitting on a stump overflowing with gum leaves & nuts - very striking multicoloured glaze featuring blues, greens & mauves - superb condition with a tiny restoration to the tip of beak - ex 'John Bailey' collection - 28.5cm tall | Very Good | 12500 - 15000 |
| 353 | Harvey School Frog Mug - incised 'D.H. (Dorothy Harvey) 1937' to base - robust hand built mug with carved vine leaf, grape & monogram decoration. Inside is a plump green frog looking at you - as featured on page 252, 'With Heart & Hand, Griffith University Art Museum' - 11cm tall | Very Good | 750 - 1000 |
| 354 | Harvey School Trough Vase - incised hand built 'E.B' (Evelyn Buggy) to base - large oval high sided trough vase with finely carved gum leaf & nut decoration - green drip glaze on light tan - some minor glaze flakes to rim - 9cm tall X 30cm long | Very Good | 350 - 450 |
| 355 | Harvey School Jug - incised 'M. McD' (Muriel MacDiarmid) - large hand built jug with stylised branch handle, applied gum leaves & nuts in a rich tan gloss glaze - lovely quality 11.5cm tall | Very Good | 600 - 800 |
| 356 | LJ Harvey Jug - incised 'L.J. Harvey, 1943, Q' to base - fine hand built jug in the form of an Aboriginal woman's head with a boomerang handle in a rich chocolate glaze - 9cm tall | Very Good | 750 - 1000 |
| 357 | Harvey School Calendar Plaque - incised 'Hand Built Biscuit, 2BD from S.E. Bott, 1930, Q'land' to reverse side - an unusual and very rare plaque that had a calendar hanging from it - exquisitely carved decoration of a bush cottage scene - 9.5cm wide X 19cm tall | Very Good | 500 - 600 |
| 358 | Harvey School Frog Trough - incised 'Nola Ruthning, 1939' to base - fine hand built trough vase in the form of a log with a detailed green frog perched to rim - striking green & blue drip glaze on tan - tiny glaze flake to one toe - 24.5cm long | Very Good | 350 - 450 |
| 359 | LJ Harvey Jug - incised 'L.J. Harvey, 1943, Q' to base - fine hand built jug in the form of an Aboriginal man's head with a boomerang handle in a rich chocolate glaze - a minor glaze touch-up to right ear - 9cm tall | Very Good | 750 - 1000 |
| 360 | Hand Built Bookends - incised 'Ada' to base (possibly 'Ada Carlill, Sydney') - hand built tree trunk bookends with applied leaves, berries & fruit - green & yellow drip glaze on tan - 12cm tall | Very Good | 225 - 275 |
| 361 | Grace Seccombe Salt & Peppers - u/m but easily attributable - a fine pair of salt and pepper shakers in the form of plump kookaburras sitting on a log - detailed hand painted decoration - 6cm tall | Very Good | 400 - 500 |
| 362 | William Ricketts Plaque - incised 'William Ricketts' - wall mounted oval plaque featuring an Aboriginal elder and on the inside the head of a young Aboriginal woman - 20cm tall X 9cm wide | Very Good | 400 - 500 |
| 363 | Grace Seccombe Wall Vase - incised 'Sydney Zoo' - fine hand built wall vase in the shape of a leaf with applied berries and leaves - green & blue splash glaze on green - made for her Taronga Zoo tourist range - 19.5cm long | Very Good | 175 - 225 |
| 364 | Nora Godlee Vase - signed 'N. Godlee, 1928' to base - a finely handpainted European blank with exquisite Art Deco flowers in a multicoloured glaze - an exceptional work from this celebrated Adelaide artist - 14cm tall | Very Good | 250 - 350 |
| 365 | Grace Seccombe Bookends - one is incised 'Grace Seccombe, Eastwood', other is incised 'Grace Seccombe, NSW' - a very unusual pair of hand built bookends in a soft mauve & turquoise glaze - one features an Aboriginal man starting fire, other is an Aboriginal woman with a food bowl - both have firing lines to underside - exceptionally rare early pieces of her work - 13cm & 15cm tall | Very Good | 2500 - 3500 |
| 366 | Giant Mashman Vase - u/m but attributed to George Day - a large heavy salt glazed ovoid vase with hand carved decoration of koalas to shoulder - some very minor marks with a chip to the lip base & 2 to the side bottom edge - 34cm tall X 25cm diameter | Very Good | 1750 - 2250 |

Graham Lancaster Auctions - Auction 104 Catalogue - July 2021

| | | | |
|-----|------------------------------------------------------------------------------------------------------------------------------------------------------------------------------------------------------------------------------------------------------------------------------------------------------------------------------------------------------------------------------|-----------|------------|
| 367 | Colonial Jardiniere - u/m but probably 'McHugh' or 'Campbell' - large ball shaped jardiniere with scalloped rim & coggle decoration - a striking multicoloured majolica glaze - some chips to rim have been skillfully restored - 23cm tall X 26cm diameter | Good | 400 - 500 |
| 368 | Mashman Jardiniere on Stand - incised 'T.S.' to base (Thomas Stevens) - tulip shaped jardiniere with embossed swirl & leaf design in a rich cobalt blue, green & tan drip glaze - matching base has been permanently joined - some discoloured crazing with a 15mm flake to base of jardiniere & some fine stress hairlines emanating from rim - most attractive - 34cm tall | Good | 750 - 1000 |
| 369 | James Campbell Jardiniere - impressed 'J.C. & S.B.' to base - pressed geometric floral design with a flared & scalloped rim - green & red drip glaze on cream - some hairlines to inner base & underside with a 60mm chip to reglued to rim - very attractive & shows well - 20cm tall | Fair | 200 - 250 |
| 370 | Colonial Jardiniere - u/m but typical early Queensland Pottery - a large open mouth jardiniere with fluted rim & pie crust trim - mottled majolica glaze of green, brown & blue patterned around body - a few small chips to pie crust trim and nibbled wear to base edge - 21cm tall | Good | 600 - 800 |
| 371 | Pair of Colonial Vases - u/m but typical early Queensland pottery - a matching pair of ovoid vases in a majolica glaze of blues, greens & tans - discoloured crazing & marks - 16cm tall | Very Good | 600 - 800 |
| 372 | James Campbell Jardiniere - imp. 'Campbell * Brisbane' to base - pressed geometric floral design with scalloped rim - a red & green drip glaze on cream - very clean with a shallow 10mm flake to rim | Very Good | 325 - 375 |
| 373 | Majolica Tobacco Jar - u/m but typical early Australian pottery - round decorated jar with a matching lid & finial knob - blue, green & tan drip glaze - lovely condition - 19cm tall | Very Good | 400 - 500 |
| 374 | Klytie Sclater Lidded Vessel - incised 'Klytie Sclater, 1936' to base - an unusual wheel thrown decanter with pressed geometric design to shoulder & matching lid - all in a soft fawn glaze - fine 20mm stress line emanating from rim - an unusual early piece of her work - 19cm tall | Very Good | 275 - 325 |
| 375 | Colonial Hot Water Jug - u/m but attributed to 'James Campbell, Brisbane' - elegant tapered hot water jug with handle & spout - complete with matching lid & pressed decoration to base of handle - an eye catching mottled glaze of green, tan & blue highlights. Some crazing & fine lines with a tiny 3mm flake to edge of spout - 17.5cm tall | Very Good | 800 - 1200 |

END OF DAY 1

IMPORTANT INFORMATION

- *Buyers Premium – 16.5% includes GST**
- *Online bidding incurs a 2.5% surcharge on the hammer price.**
- *Payment – Preferably EFTPOS, Visa or Mastercard (2% Handling Fee).**
- *Cash & Cheque payments can be made. If paying by Cheque, prior arrangement must be made with the auctioneer.**
- *Condition Reports - Absentee and internet bidders are advised to obtain additional condition reports, if you are unable to view the items in person.**
- *All goods are to be removed from premises on day of sale, unless prior arrangement has been made with the auctioneer.**
- *Absentee Bidders - parcels will be professionally packed and sent via Australia Post.**

Problems registering for online bidding or placing bids –

Call Webtron support on 1300 667 153



294



295



296



297



298



299



300



301



302



304



303



305



306



307



308



309



310



311



312



313



314



316



315









351



352



354



355



356



357



359



363



358



361



364



362



365



366



360



367



COVID-19 PRECAUTIONS

- . These Auctions will be conducted under strict Covid 19 protocols, as set out by the Royal Agricultural Society of Queensland's Covid Safe Plan.**
- .There will be increased hygiene practices and Regular sanitizing to protect both attendees and staff.**
- . If you have any flu-like symptoms, or have been in a hotspot in the 14 days prior to the Auctions, we ask that you stay at home.**
- . Auction attendees will be asked to practice Social distancing of a minimum 1.5m, sanitize Hands before and during the Auctions and may be required to wear a mask.**

PLEASE NOTE -

Due to Covid-19 restrictions - dates, venues and times may change without prior notice.

Check our website www.gdlauctions.com.au for updates